

## WEBINAR 1

### The British Library and the Knowledge Quarter

12 November 2020



# THE TEAM



**STANHOPE**



**SMBL**

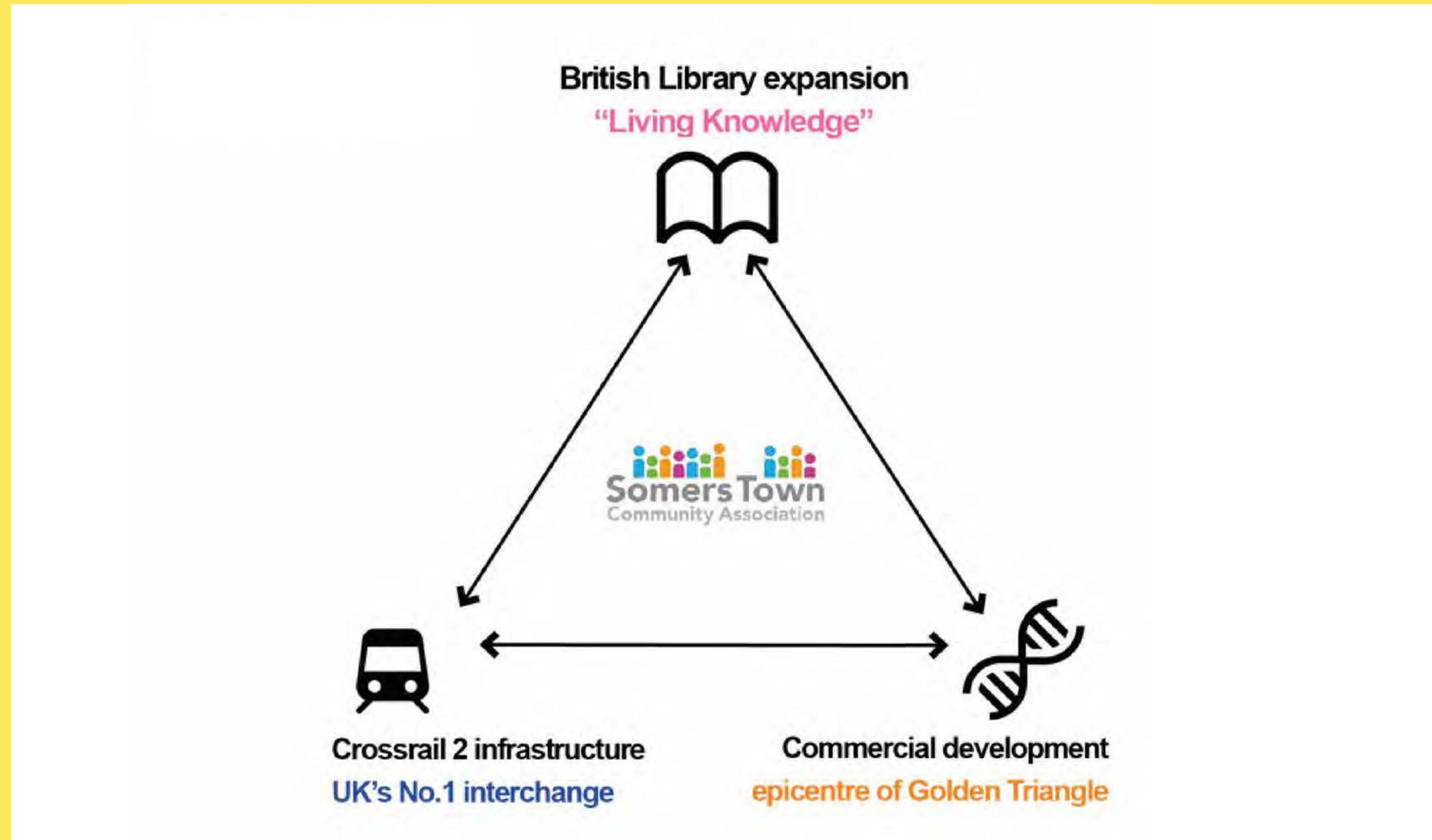


**ARUP**

**DSDHA**



# AN UNIQUE OPPORTUNITY: ELEMENTS





# SUSTAINABILITY PRINCIPLES



Partnerships to magnify the positive outcomes of the BL project across wider communities.



Creating an inclusive place that adds social value to the local Camden area and community.



Aspiration for net zero carbon and future resilience through integrated design.



Creating a hub that supports innovation and delivers sustainable employment.



Using the available space to focus on high quality biodiverse habitats, which engage users.



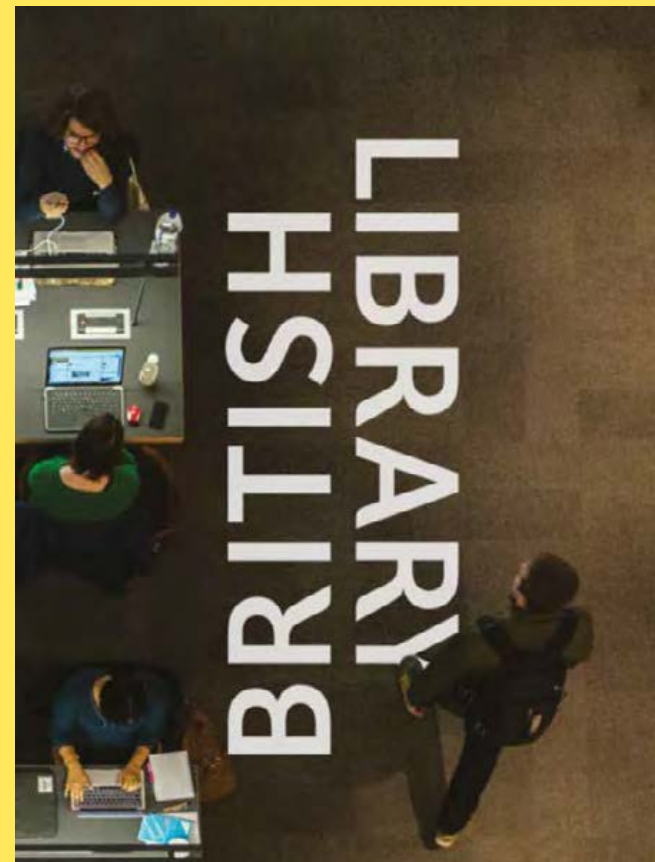
Using the Library project to support the needs of the local community.

# WORKING WITH THE COMMUNITY





# AN UNIQUE OPPORTUNITY: BRITISH LIBRARY



We make our  
intellectual  
heritage  
accessible  
to everyone,  
for research,  
inspiration  
and enjoyment

- |                  |                  |
|------------------|------------------|
| 1. Custodianship | 4. Culture       |
| 2. Research      | 5. Learning      |
| 3. Business      | 6. International |

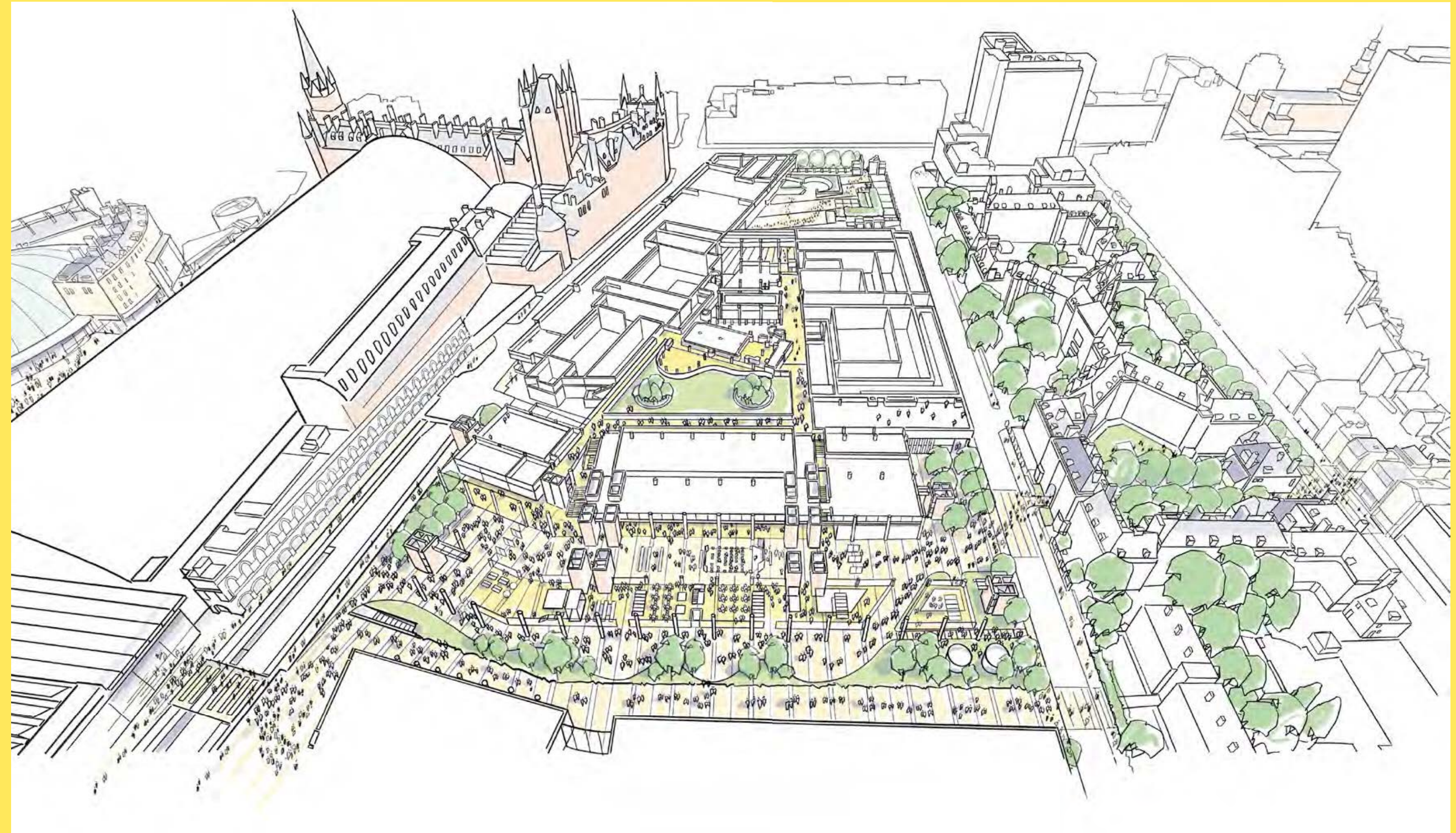




# A LIBRARY FOR EVERYONE

**Provision of a major cultural space for London** designed, managed and programmed to be inclusive for all, and specifically integrating the needs and creating opportunities for the local community.

**SMBL and BL will support a programme of events** to bring the local community, businesses, library and KQ occupiers together to explore opportunities and local projects.





# WITH A COMMUNITY FOCUS

**Expansion of the BL with 10,000sq.m of new British Library Space** to serve the Library's public learning, exhibition, events and business facilities and deliver a range of spaces for community use which are flexible, versatile and able to host: exhibitions, art shows and events.

**A transformation of the real and perceived permeability and accessibility of the British Library** and associated facilities for the public, and in particular the immediate communities in Camden, including a new entrance from Ossulston Street and a publicly accessible ground floor to reinforce the knowledge ecosystem and create a democratic space accessible to all.

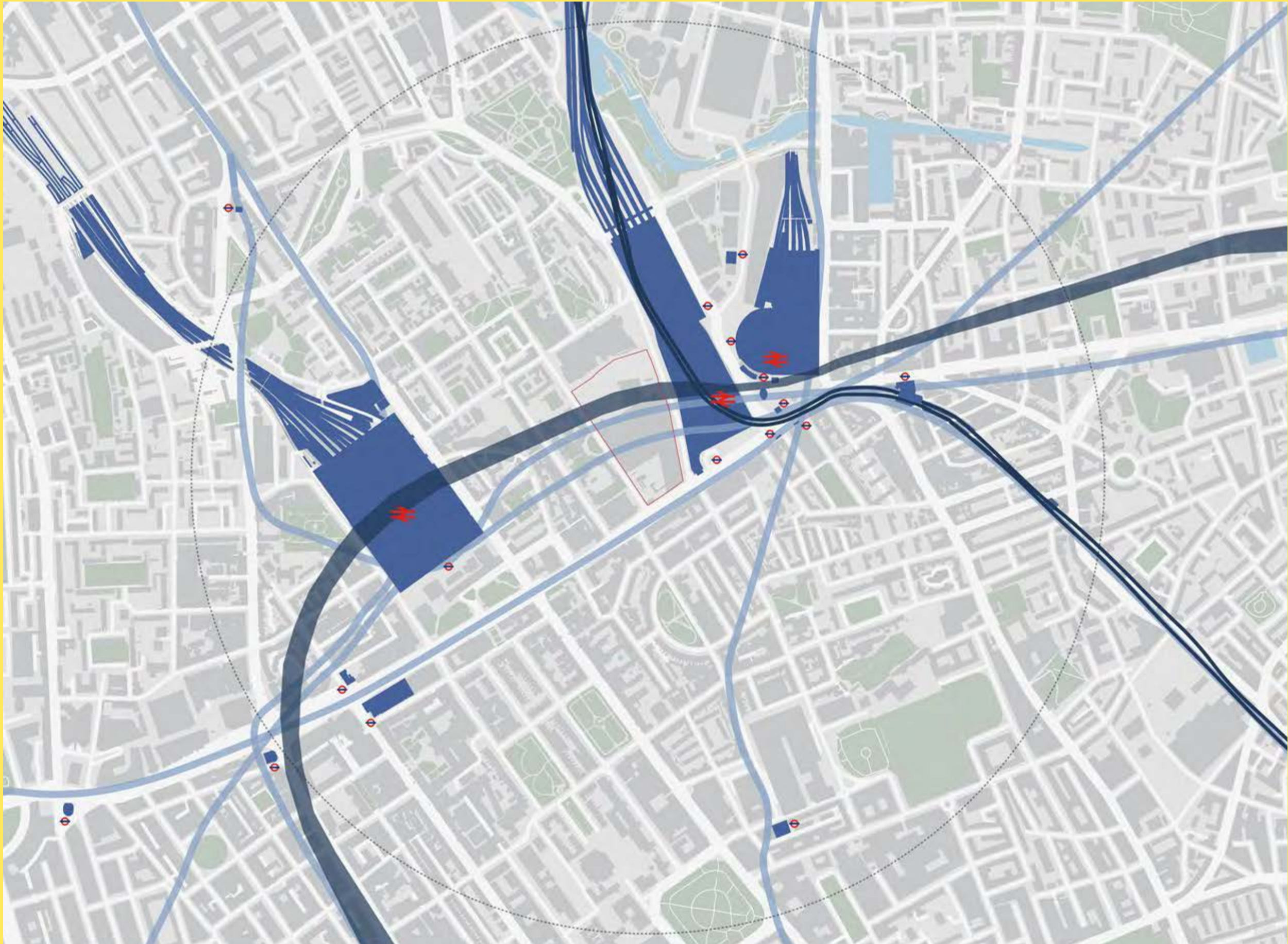
**Establishment of Community Advisory Groups** (run by the British Library) whereby the community can be involved in the creation of collaborative projects and the longterm delivery of community-based services.

**Working with the community and residents** to co-curate locally inspired exhibitions and events that are of particular relevance to the Camden community and add to the richness of the Library's offer to all.

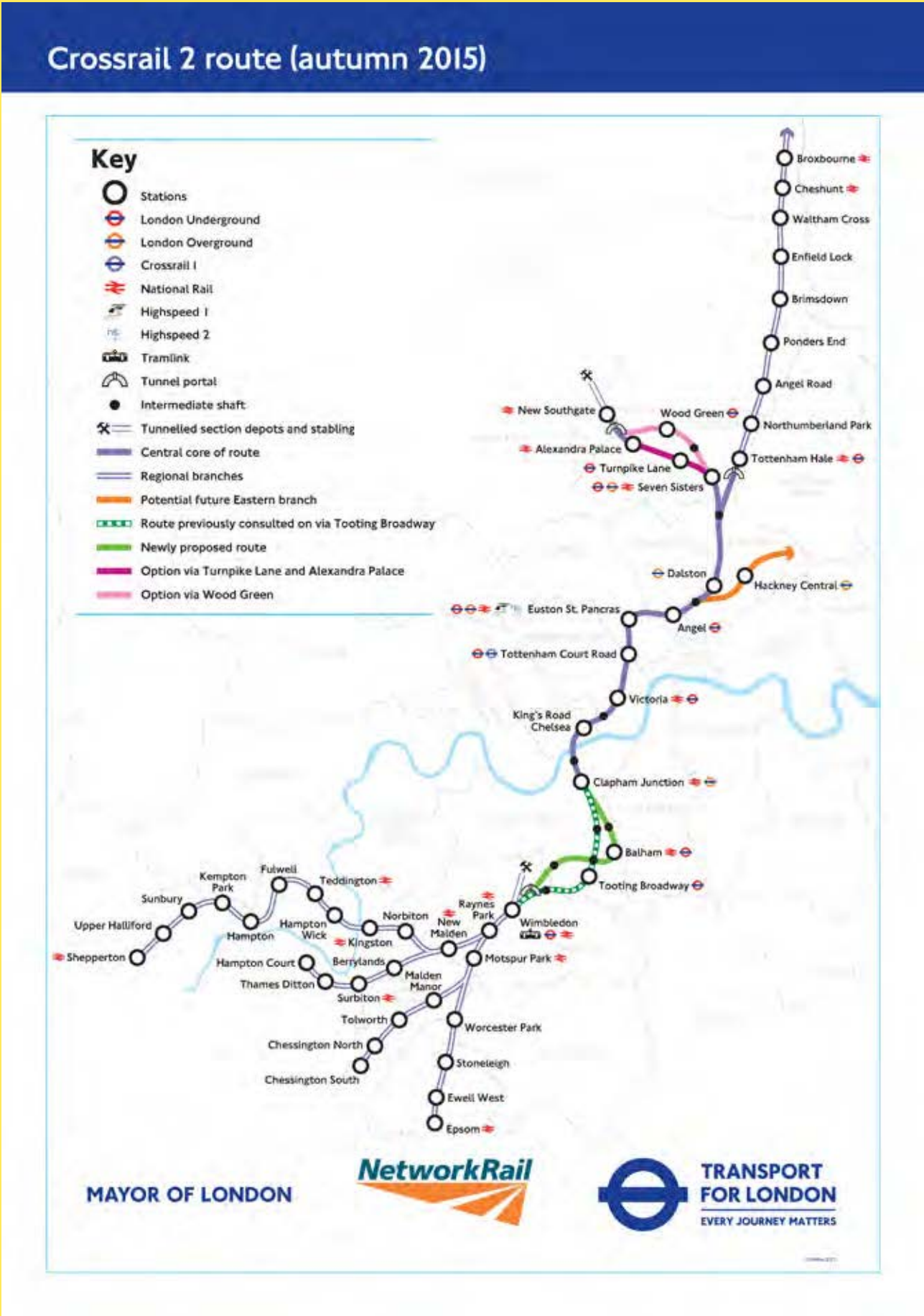




# CONTEXT

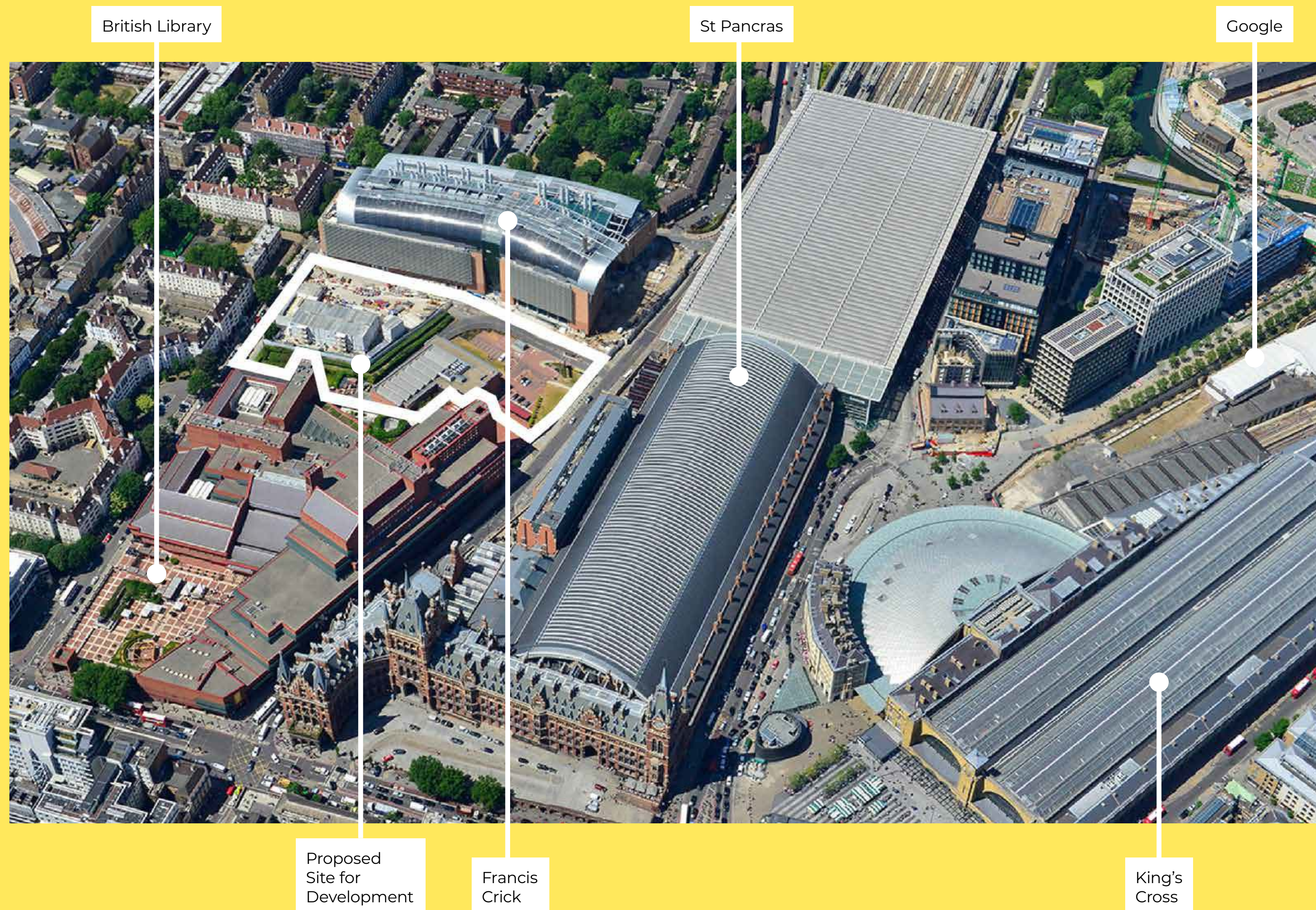


The extension site in context of the surrounding area.





# AN UNIQUE OPPORTUNITY





# AIMS OF THE PROJECT AND SKETCHES

**1. Growing the Library offer**

**2. Unlocking London's largest transport hub**

**3. Creating the heart of the Knowledge Quarter**





# WORKING WITH THE COMMUNITY

**Work with local individuals, schools and community groups to co-create events** celebrating local history, heritage and culture and to deliver co-curated exhibitions using items from the Library's collections and local history archives to showcase the rich history of Somers Town to residents and visitors.

**Work with community groups**, local artists etc. to consider how Somers Town history and culture might be reflected and incorporated into the design of both the external and internal spaces of the new development.

**Commencement of Community Gardener** in Sept 2020 coordinated by Global Generation. DSDHA will work with Global Generation to map existing greening projects and identify further greening projects in Somers Town, with consensus of residents.

**These greening projects would be facilitated by Global Generation**, working with the community and with the support of SMBL team to roll out projects during the construction period.

This would ensure that Global Generation maintain a presence in Somers Town when the Story Garden is relocated as a result of construction commencing.





# ECONOMIC BENEFITS FOR THE LOCAL AREA

## Delivery of a significant number, and diversity of jobs, work placements and apprenticeships

- Jobs during construction
- 600,000sq ft new employment space
- 100,000sq ft of expanded British Library

## Affordable Work Space

- Provision of free wifi and study desks within the BL
- Support for start-ups and micro businesses

## Library Business and Intellectual Property Centre

- Incubator space and spin out space for Knowledge Sector SMEs

## Promotion of the Camden STEAM Commission objectives and other initiatives

- E.g. Good Work Camden, and London Living wage

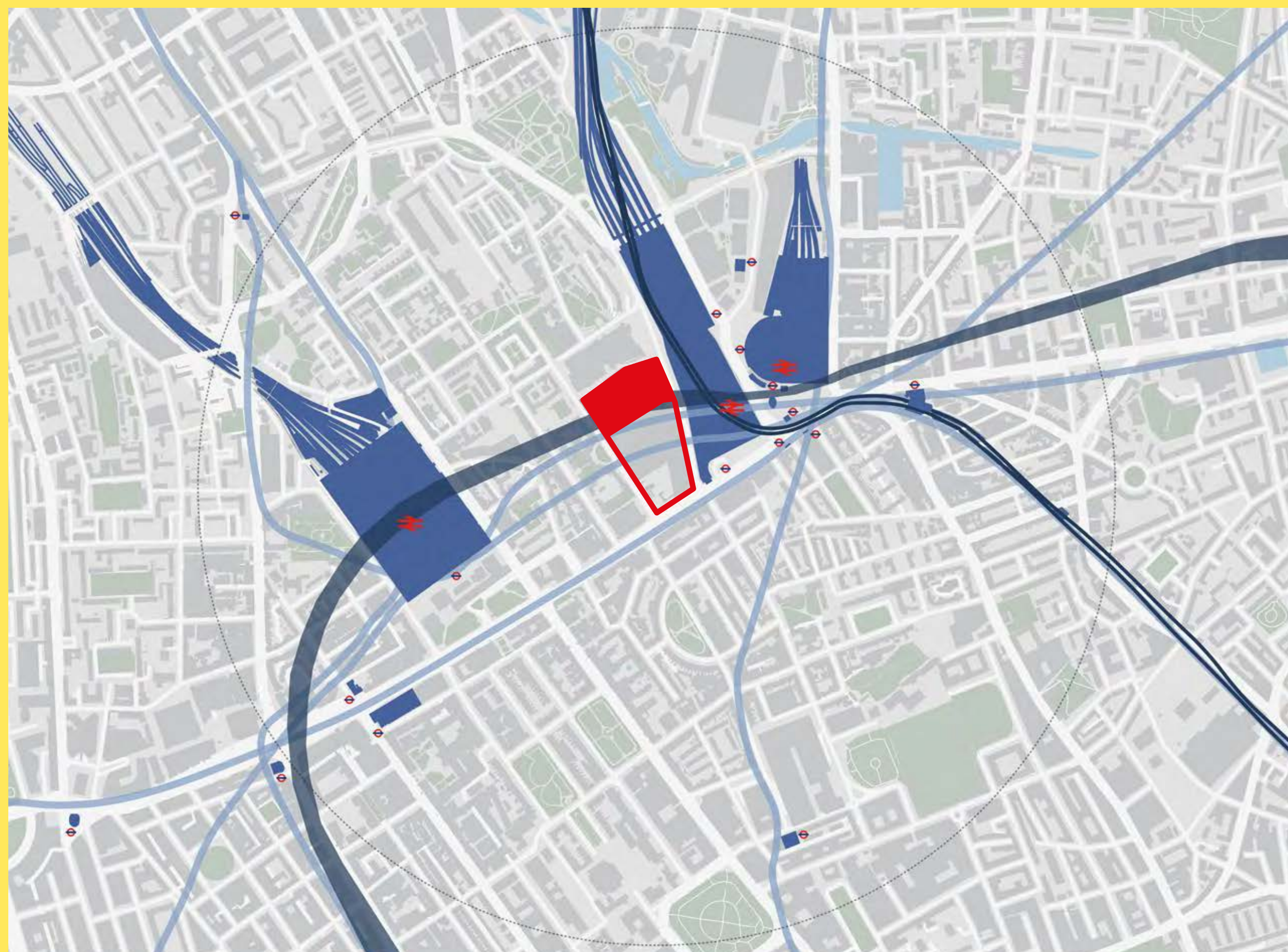
## Connecting business and the local communities

- Foyer space programmed with events and activities
- Education job and procurement opportunities
- Local environmental and social initiatives
- Target local recruitment through KXCSC, the Somers Town Job Hub and Good Work Camden





# CONTEXT



The extension site in context of the surrounding area.



Learning



Cultural



Commercial



Public Green Spaces



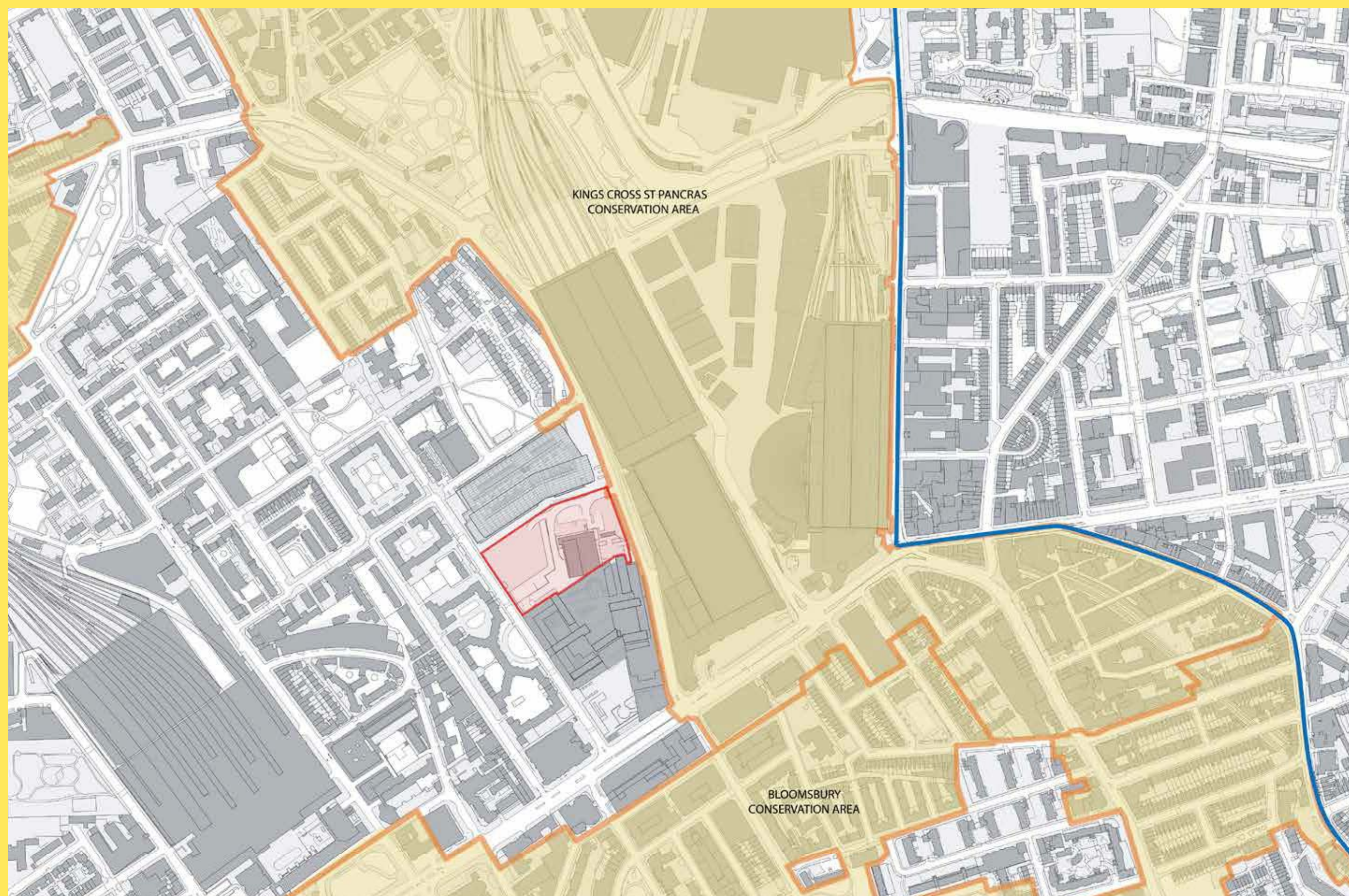
Playful Places



Sheltered Places






# CONTEXT



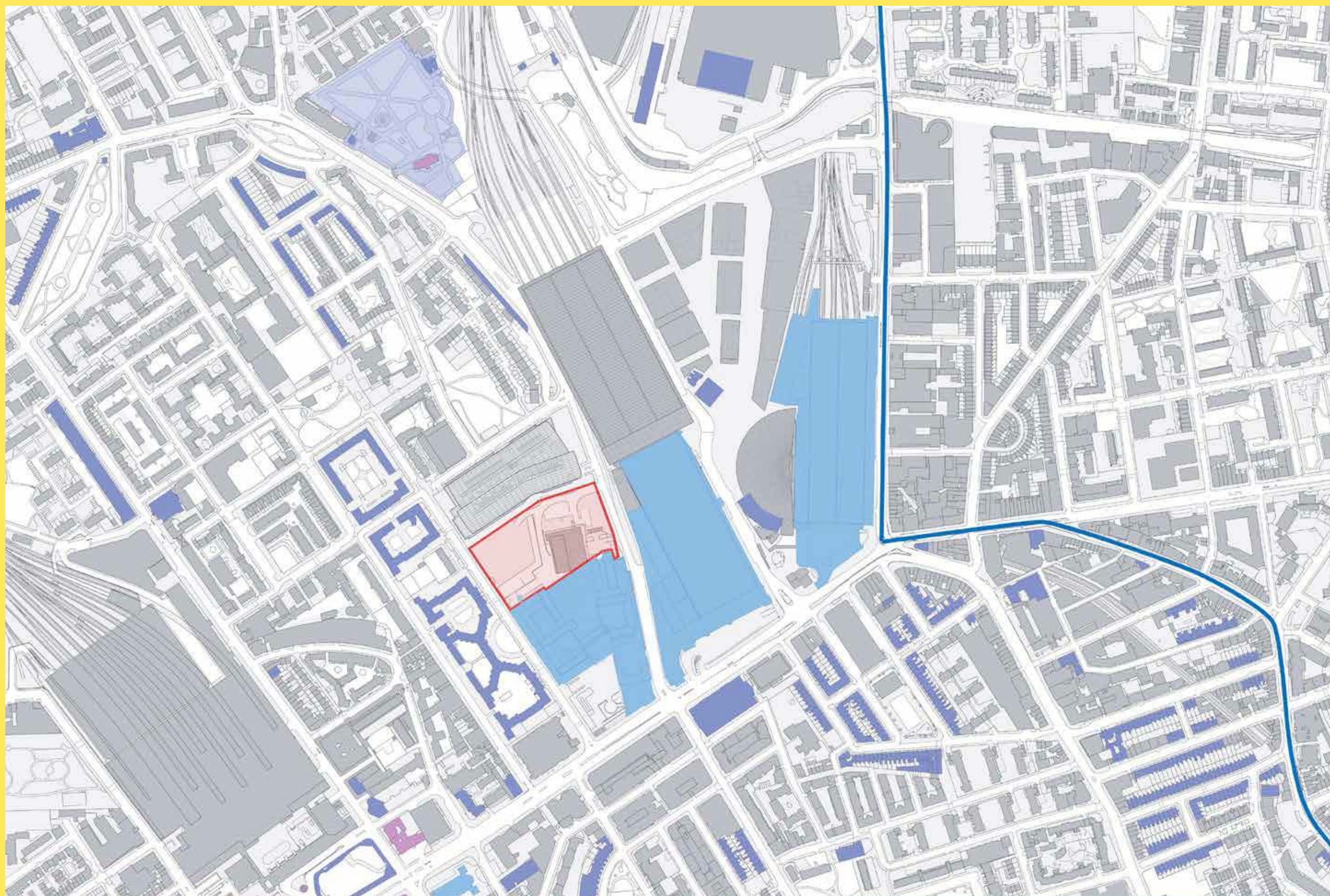
Conservation areas.

## Conservation Areas

-  Conservation Area
-  Camden Boundary
-  Site Boundary



# CONTEXT



Listed buildings.

## Listed Buildings

- Grade I
- Grade II
- Grade III
- Camden Boundary
- Site Boundary



St. Pancras New Church



King's Cross Station



Levita House



St. Pancras Station



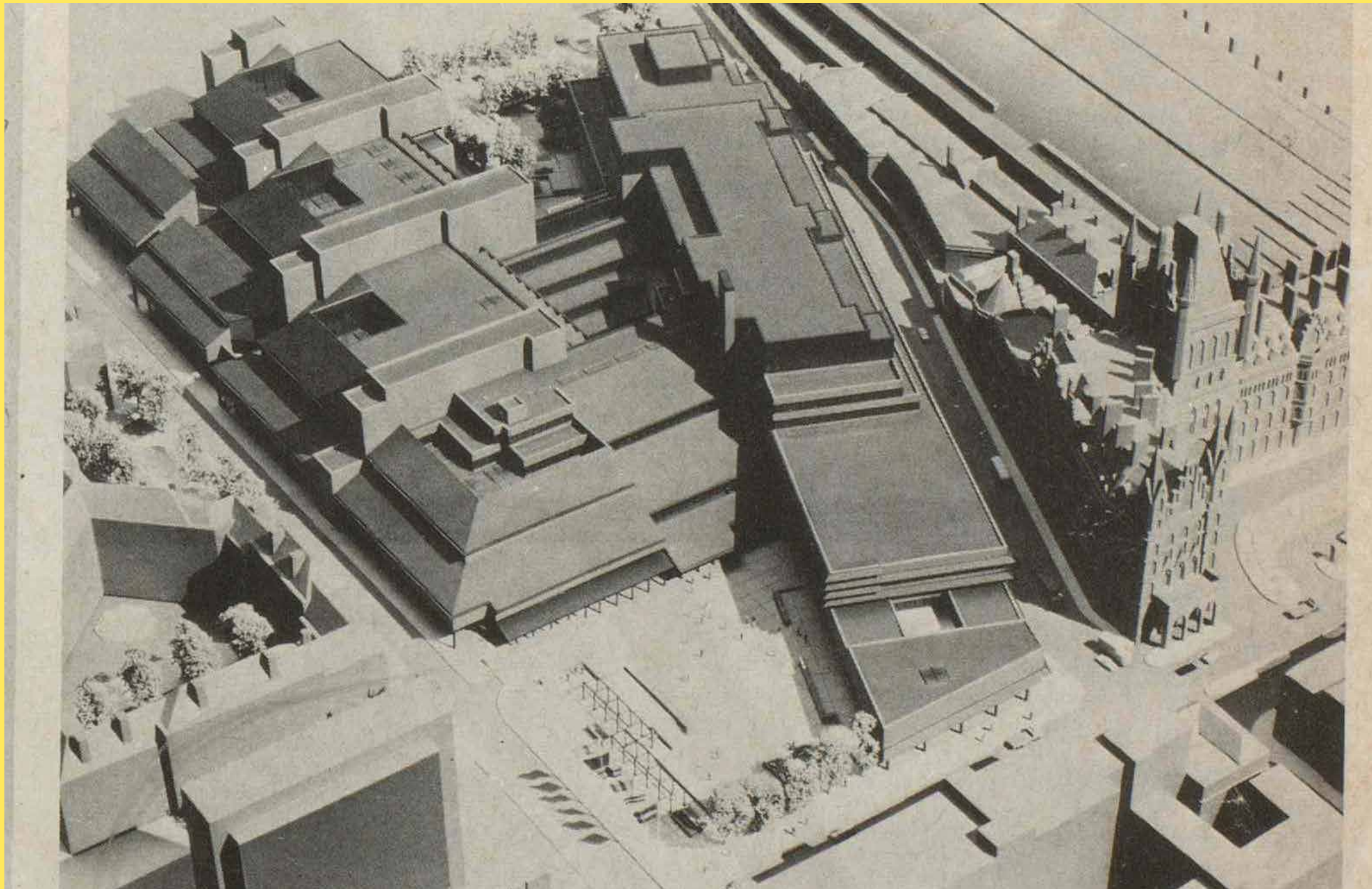
Camden Town Hall



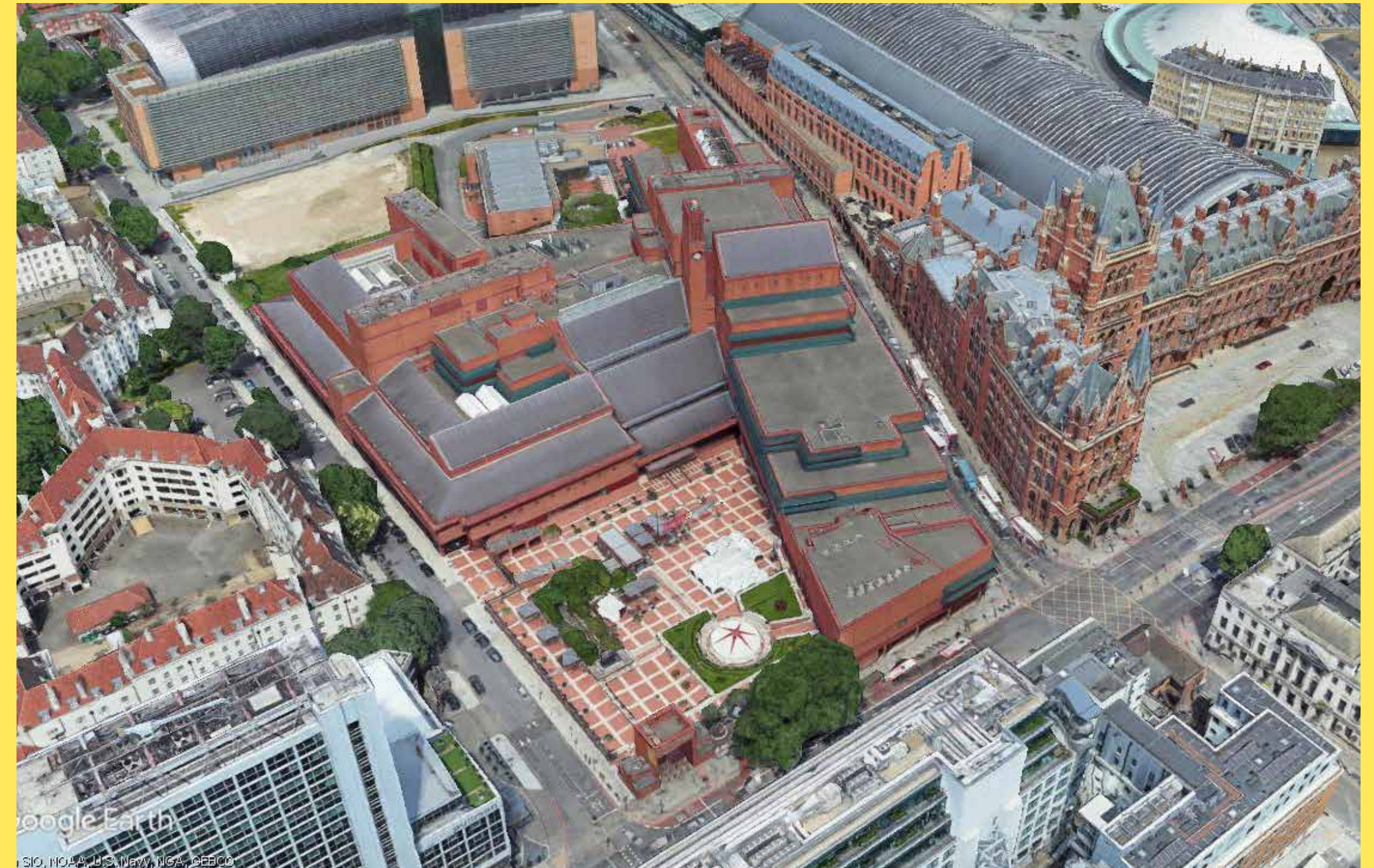
Chamberlain House



# SITE: BRITISH LIBRARY EVOLUTION



BL project as originally conceived in 1978.

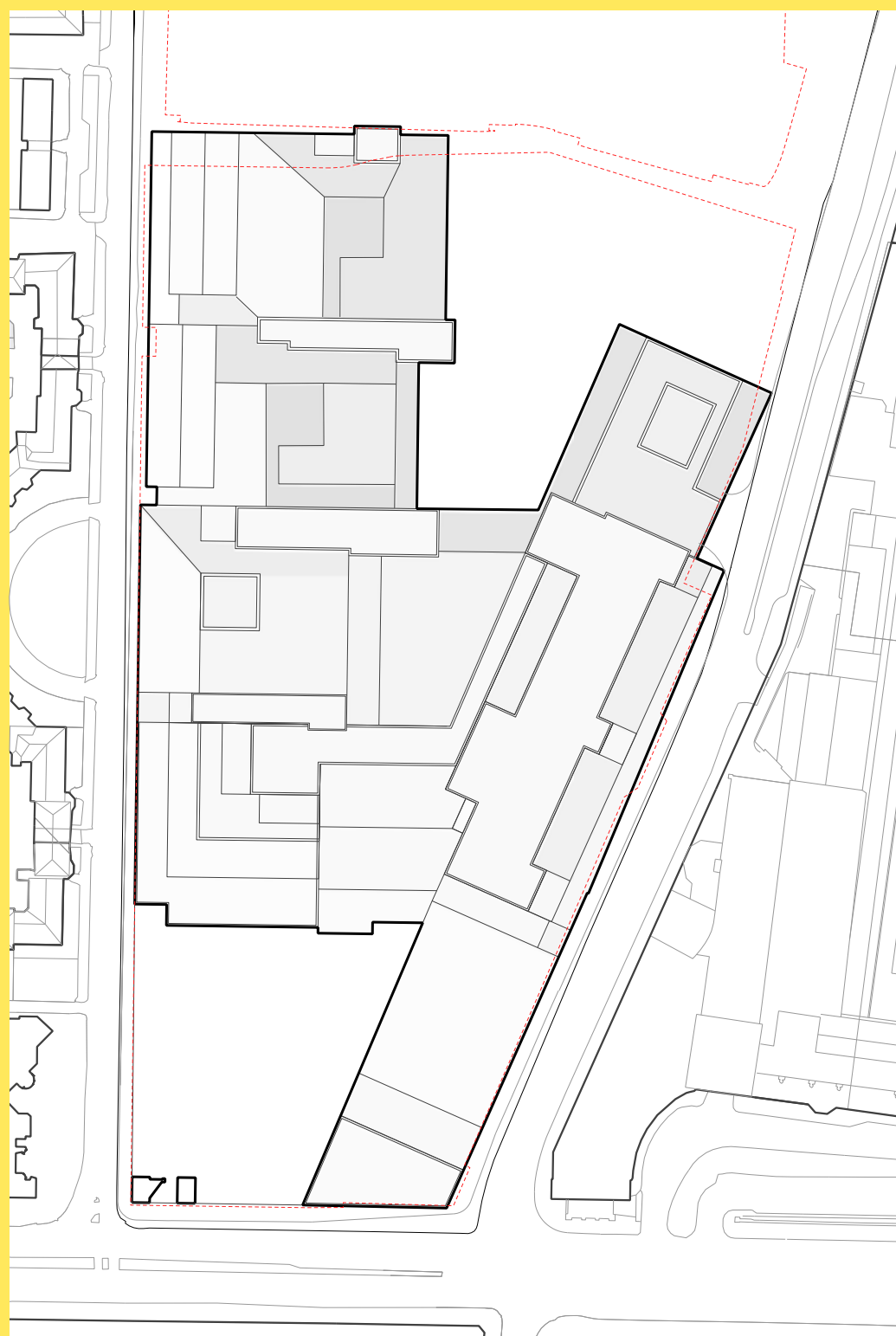


Aerial View of Existing British Library Site from NE.

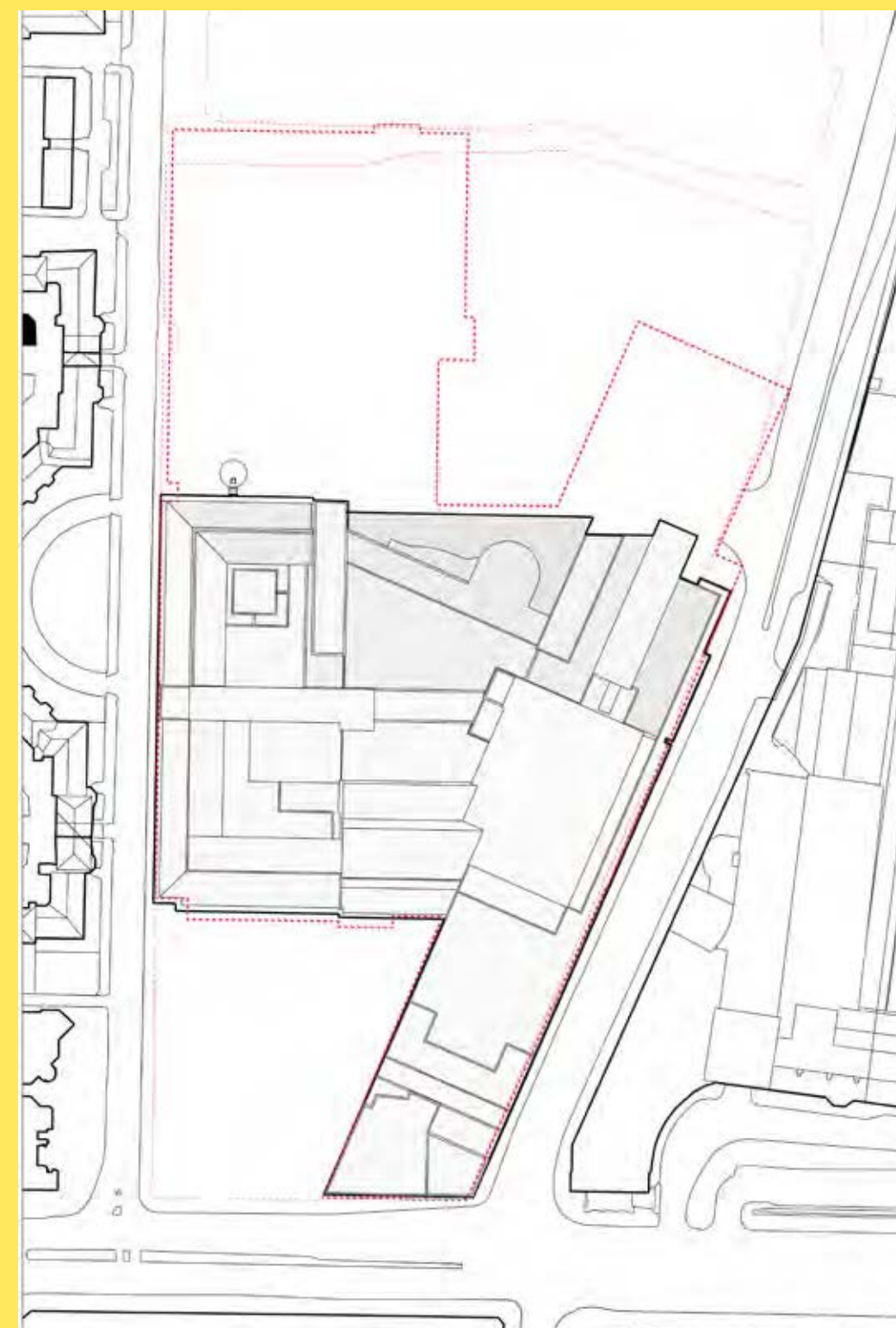


# SITE: BRITISH LIBRARY EVOLUTION

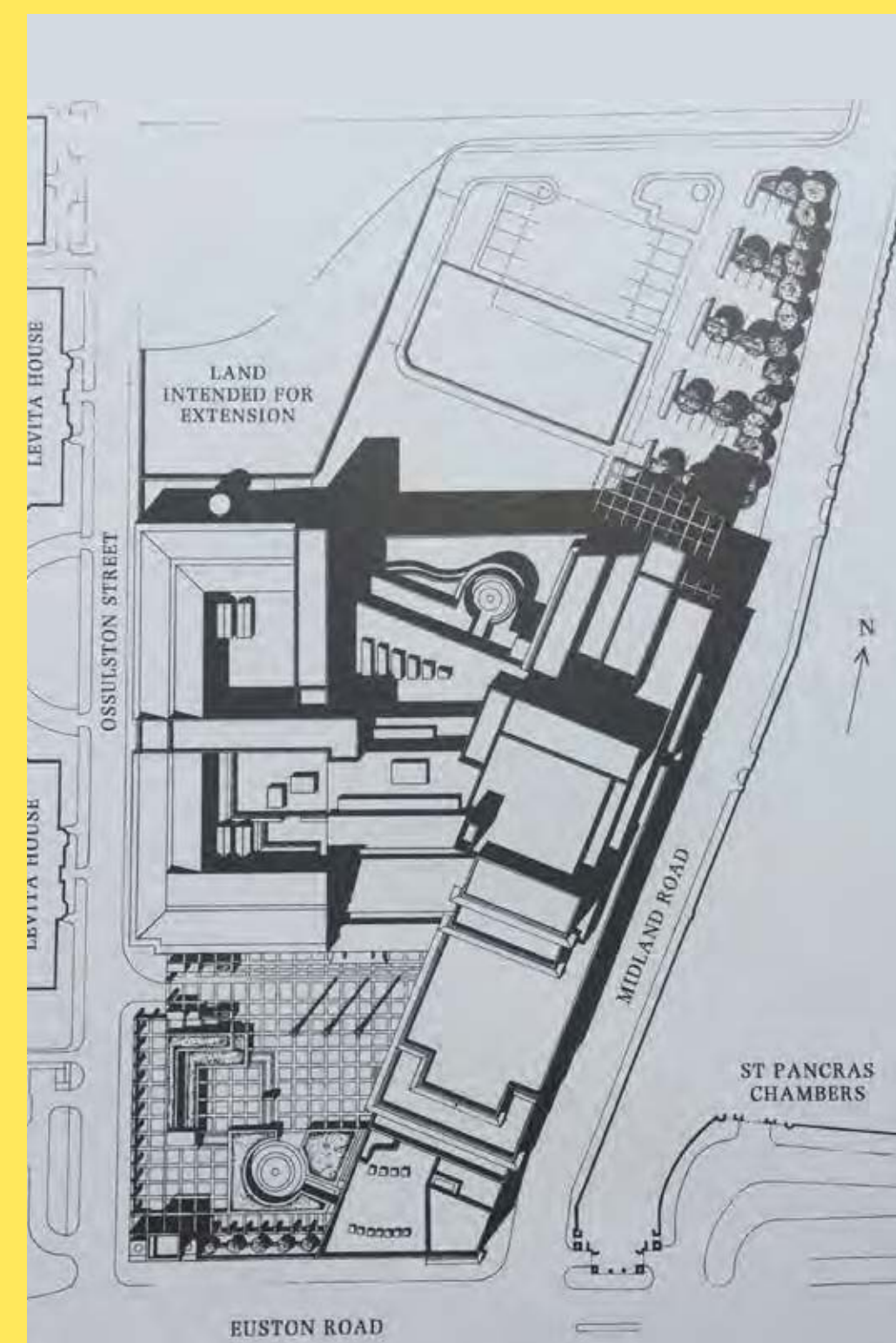
## Historic British Library Site Development Plans



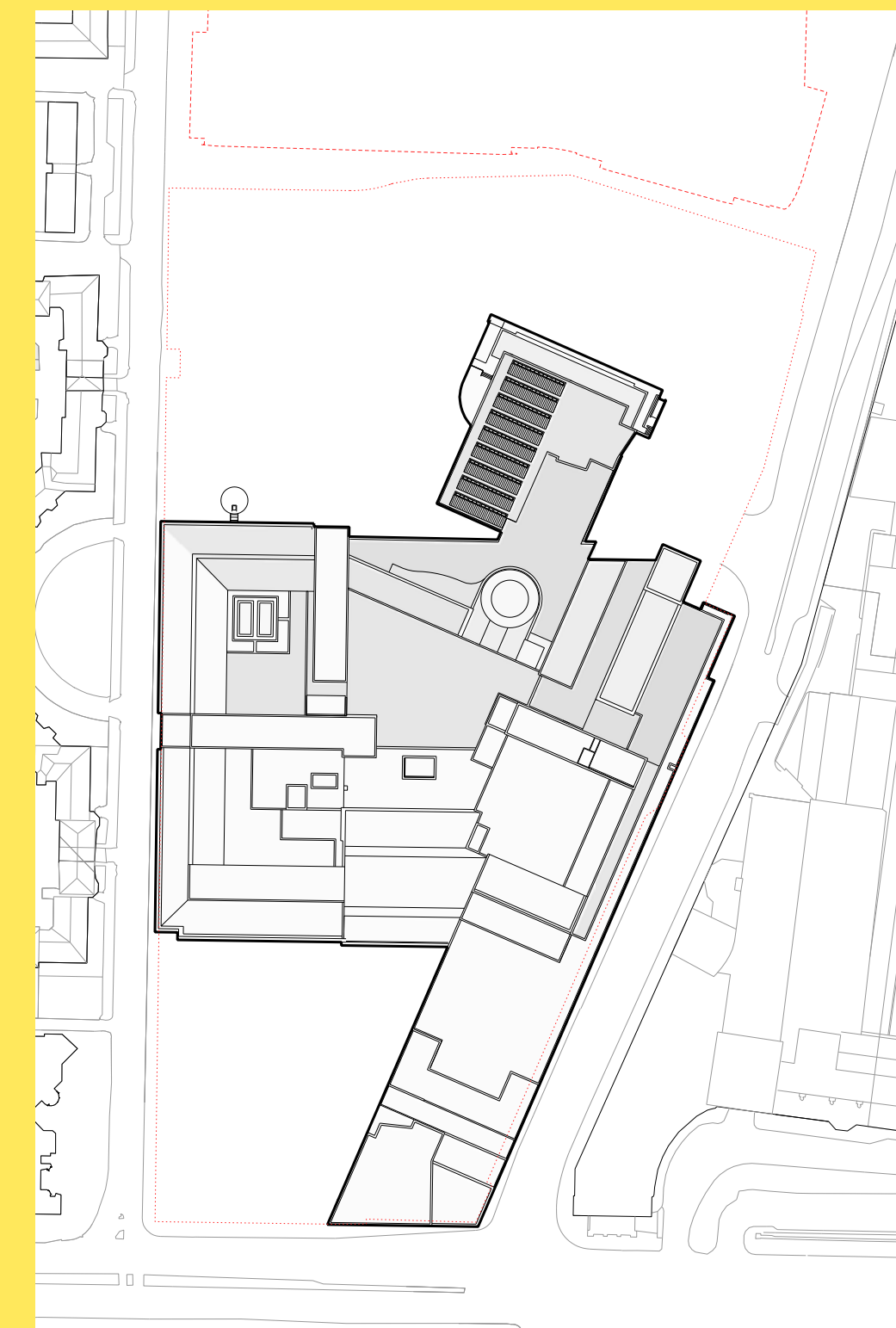
British Library 1978.



British Library 1998.



British Library Historic Roof Plan.



British Library 2007.

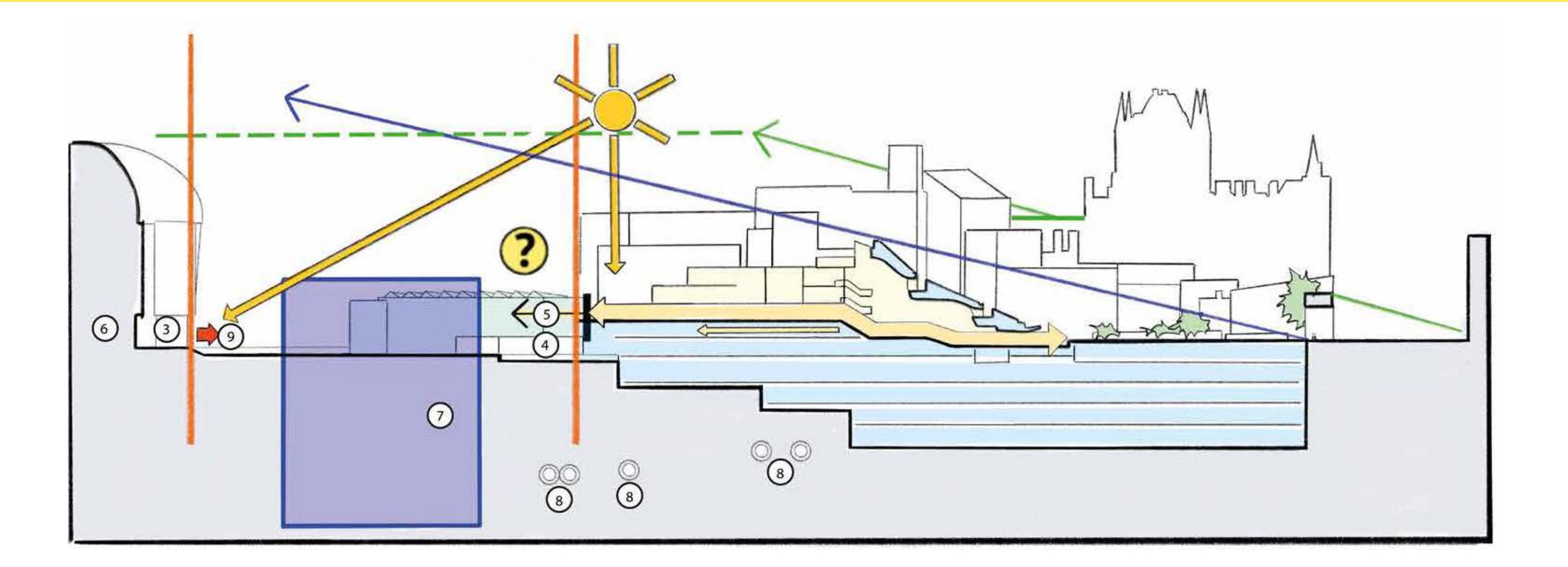


# CONTEXT

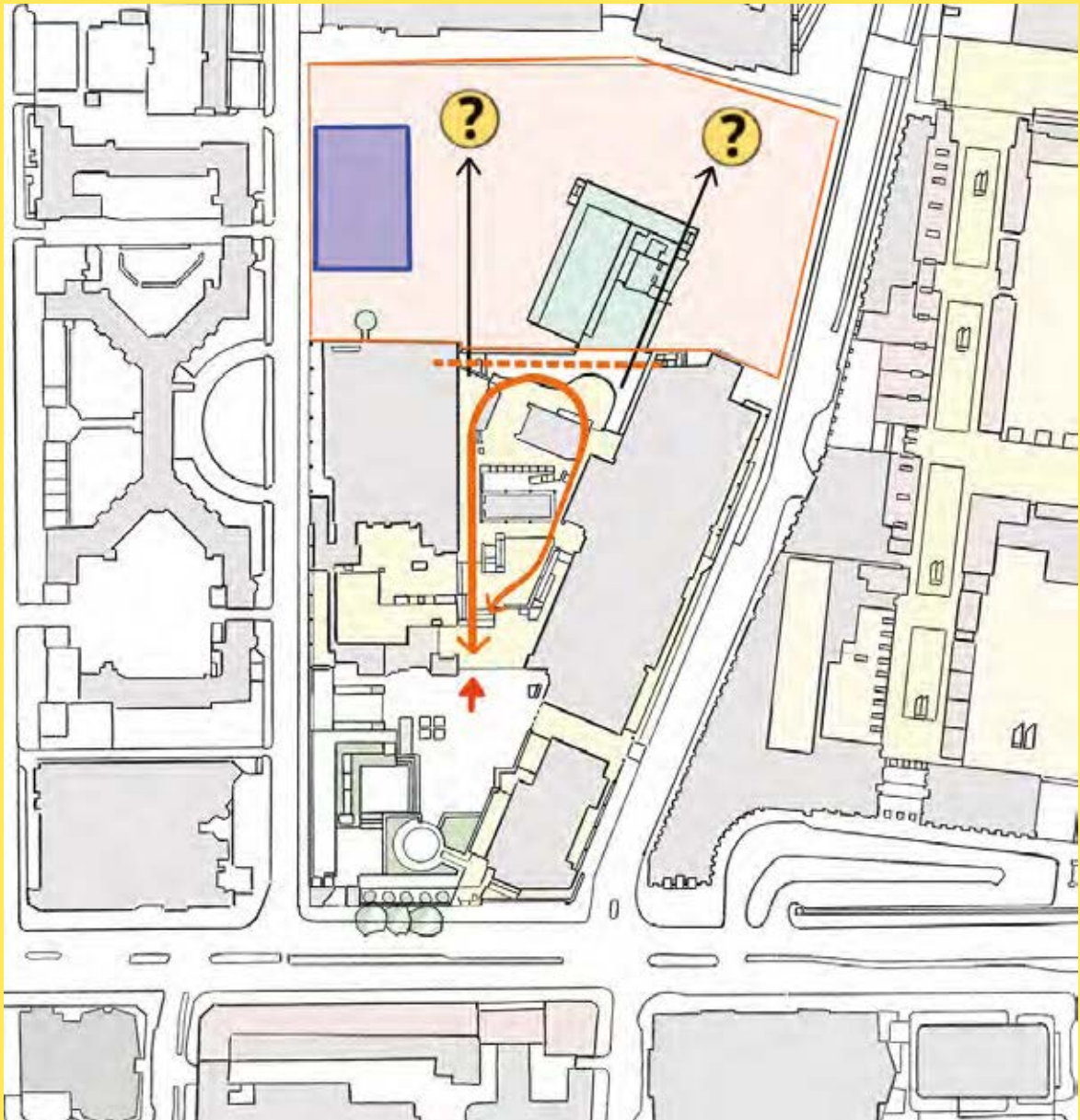




# SITE ANALYSIS: PLAN & SECTION



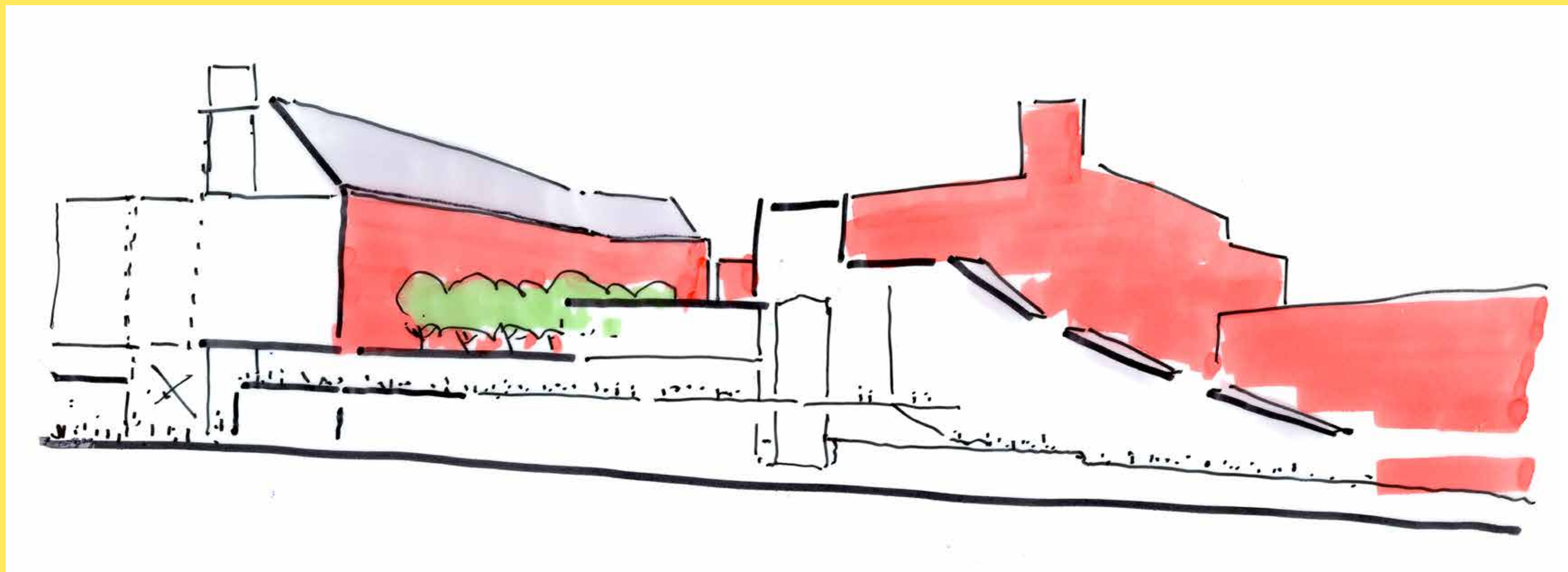
N/S Site Constraints Section.



- |  |   |
|--|---|
| 1. Development area                                      | 8. Existing Tube Line tunnels   |
| 2. Impact considerations including daylight and sunlight | 9. New Northern entrance to Library                                     |
| 3. Public routes of Dangoor Walk                         | 10. Height Limit restricted by surrounding buildings                    |
| 4. Loading bay at ground floor level                     | 11. Backdrop views from existing British Library entrance forecourt     |
| 5. Required Library extension over three floors          | 12. Existing public circulation terminated by existing external terrace |
| 6. Francis Crick Institute                               |   |
| 7. Safeguarded CR2 infrastructure                        |   |



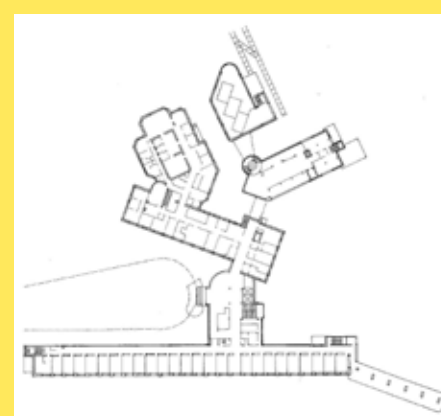
# CONCEPT RESPONSE



Auditorium of the University of Technology, Helsinki.



Seinäjoki town hall, Finland.



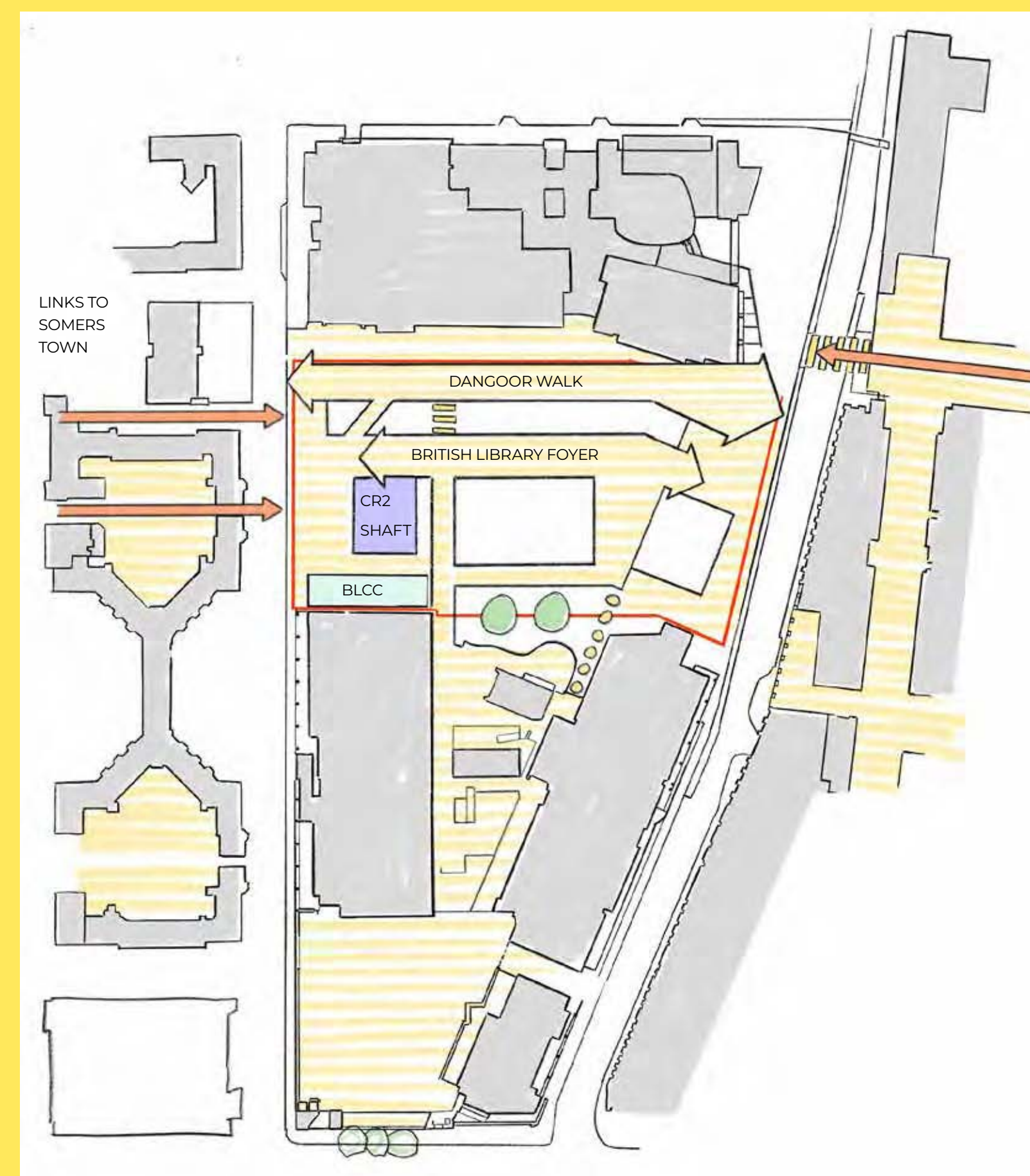
Alvar Aalto – Paimio Sanatorium, Finland.



Alvar Aalto - Saynatsalo Town Hall, Finland.

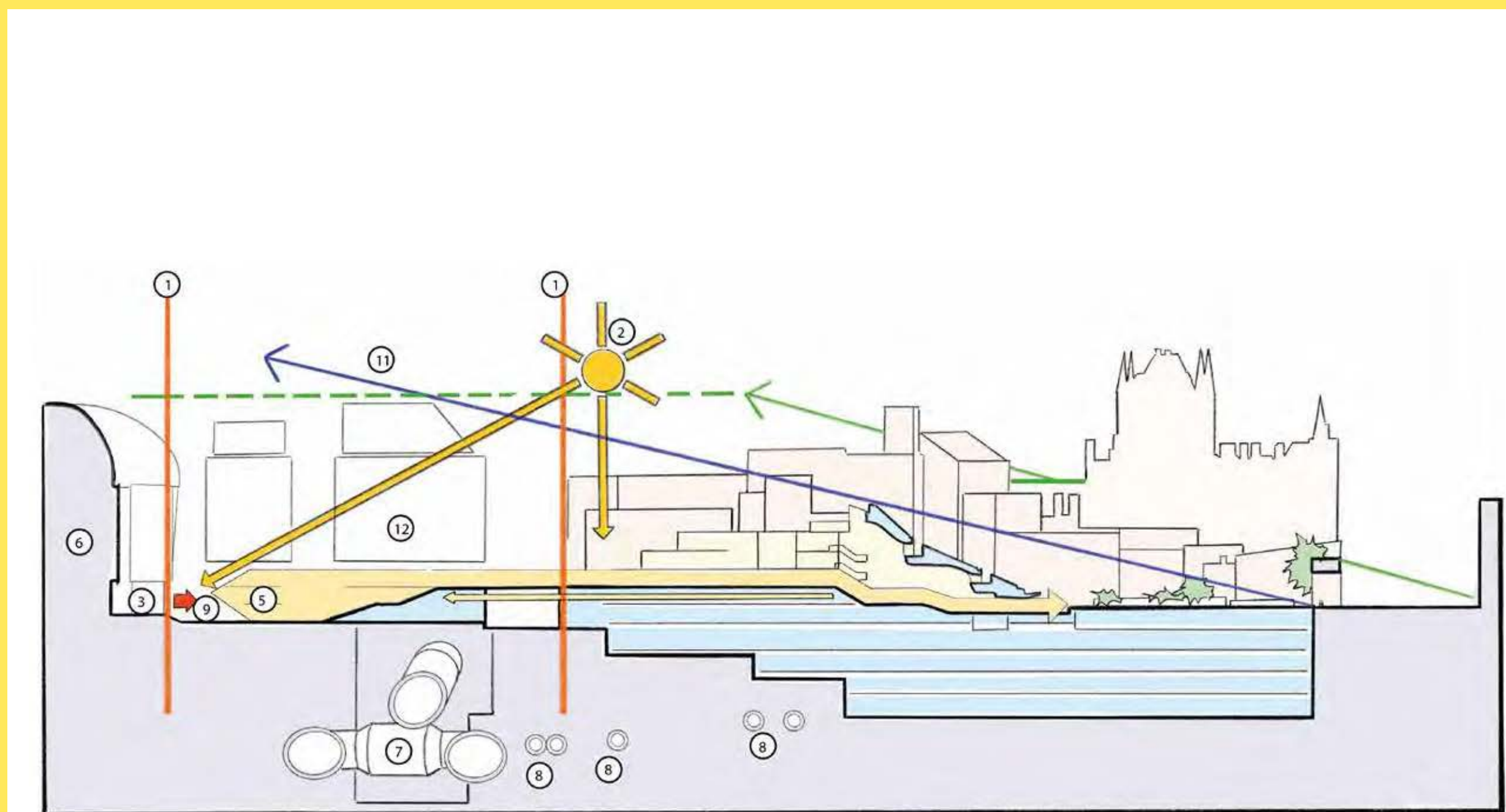


# SITE CONSTRAINTS AND RESPONSE





# SITE RESPONSE: PLAN & SECTION



N/S Site Constraints Section.

## Listed Buildings

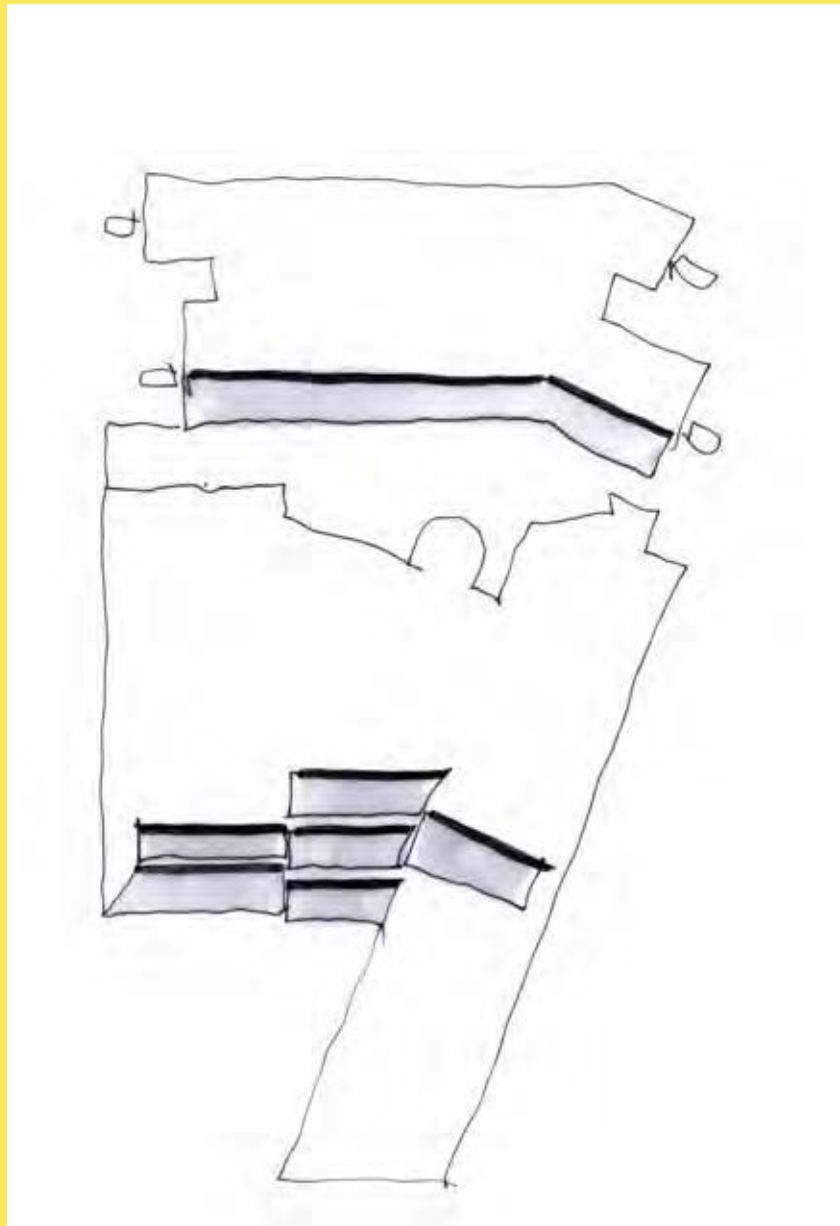
1. Development area
2. Impact considerations including daylight and sunlight
3. Public routes of Dangoor Walk
4. Loading bay at ground floor level
5. Required Library extension over three floors
6. Francis Crick Institute
7. Safeguarded CR2 infrastructure
8. Existing Tube Line tunnels
9. New Northern entrance to Library
10. Height Limit restricted by surrounding buildings
11. Backdrop views from existing British Library entrance forecourt
12. Existing public circulation terminated by existing external terrace



# CONCEPT PLAN COMPONENTS



Site Response – Public Circulation.



Site Response – South Facing Sloping Planes.

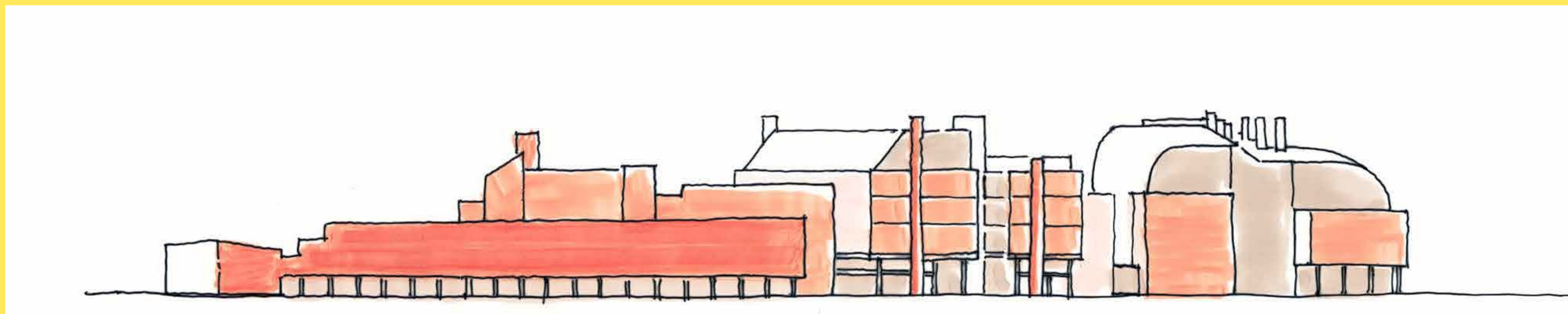
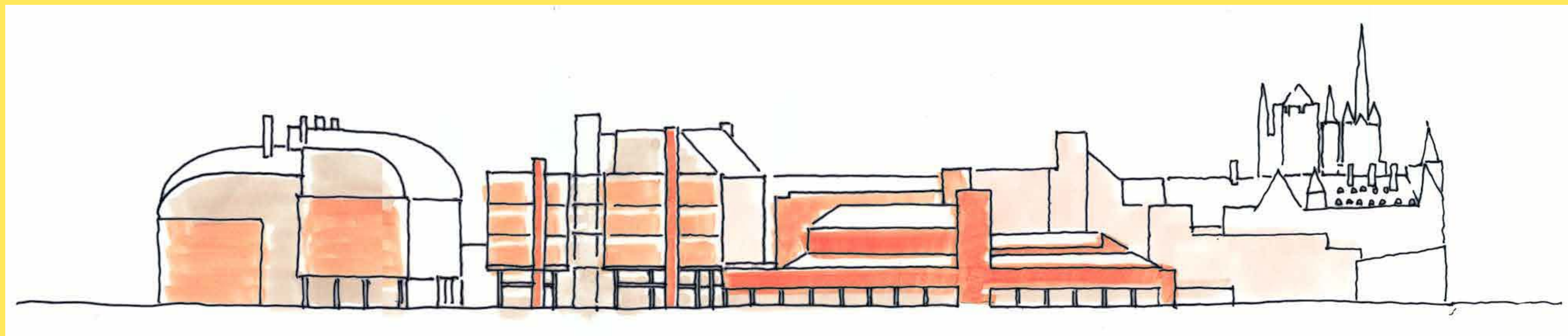


Site Response – Colonnades and Cloisters.





# INITIAL MASSING CONCEPT



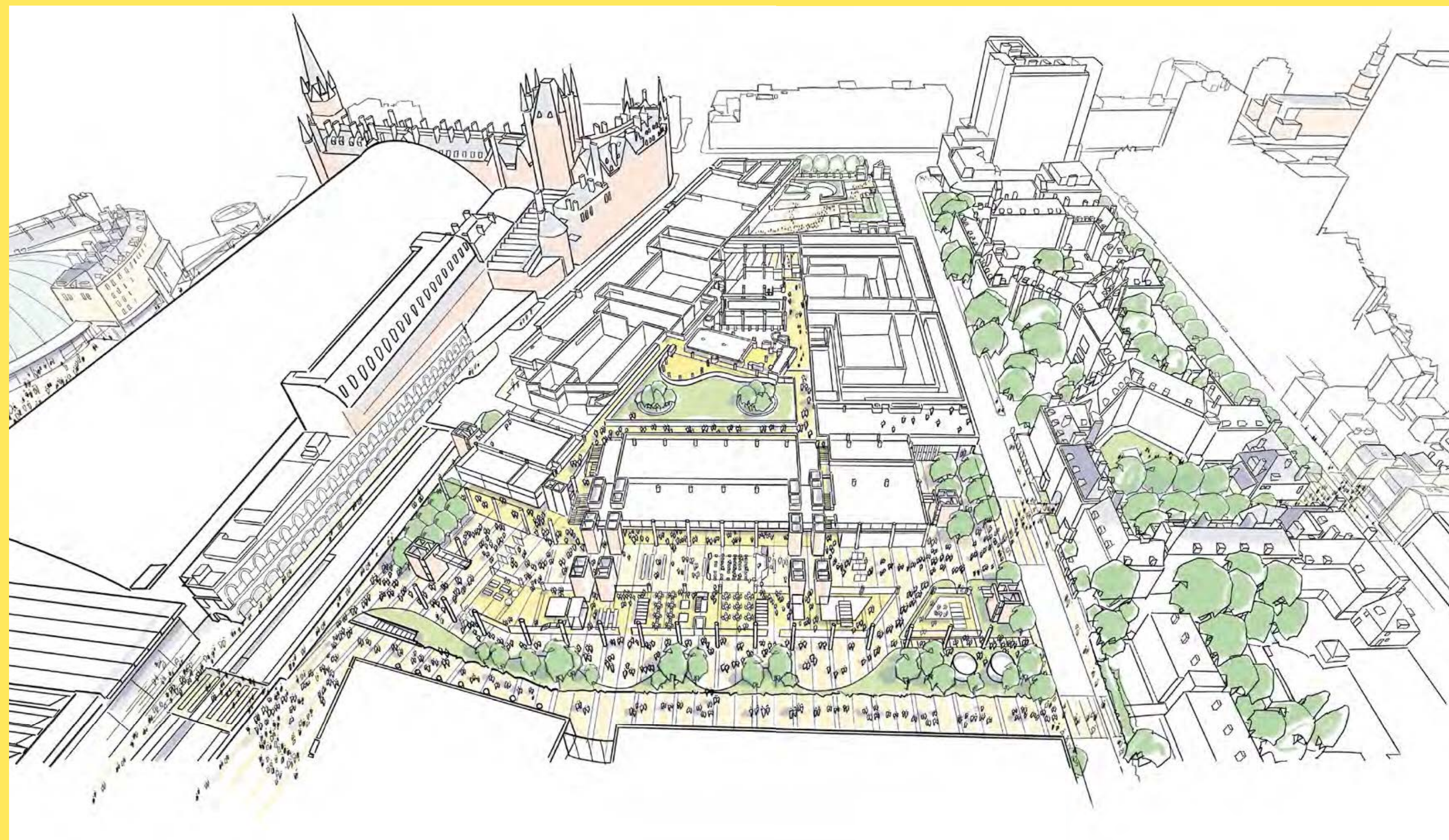
Elevation to Ossulston Street (Top) and Midland Road (Bottom).



# PUBLIC REALM

**Provision of a major cultural space for London** designed, managed and programmed to be inclusive for all, and specifically integrating the needs and creating opportunities for the local community.

**SMBL and BL will support a programme of events** to bring the local community, businesses, library and KQ occupiers together to explore opportunities and local projects.





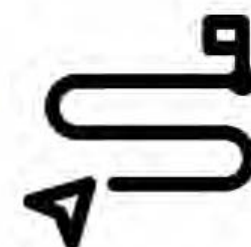
# SUMMARY



Approximately 100,000 sq ft of new space for the British Library



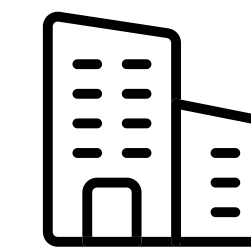
New northern entrances to the British Library on Midland Road and Ossulston Street



Connections to the existing British Library, creating new north-south and east-west routes through the site



A series of new, large public and civic spaces for all to enjoy



New space for the British Library Centre for Conservation (BLCC)



Ground floor uses that will enliven Dangoor Walk and provide a community space



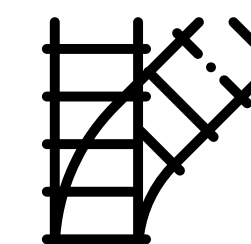
A sustainable building that has been designed to reflect the vision of the UN Sustainable Development goals.

The Alan Turing Institute

A new headquarters for The Alan Turing Institute



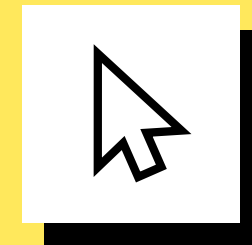
New employment opportunities from the additional commercial space



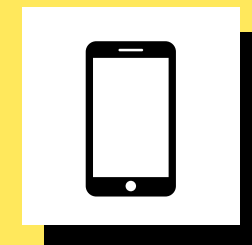
Connecting passenger route between Euston and St Pancras through Crossrail 2  
Delivering key piece of linking infrastructure



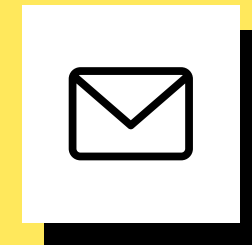
# CONTACT DETAILS



**[www.blextension.co.uk](http://www.blextension.co.uk)**



**0800 307 7968** (freephone)



**[blextension@londoncommunications.co.uk](mailto:blextension@londoncommunications.co.uk)**



THANK YOU

Any questions





# PROJECT TIMESCALES

