

WEBINAR 4

What we've learnt so far and community engagement

16 December 2020

THE TEAM



STANHOPE

 **MITSUI FUDOSAN**

LIBRARY
BRITISH

SMBL

Rogers
Stirk
Harbour
+ Partners

ARUP

DSDHA

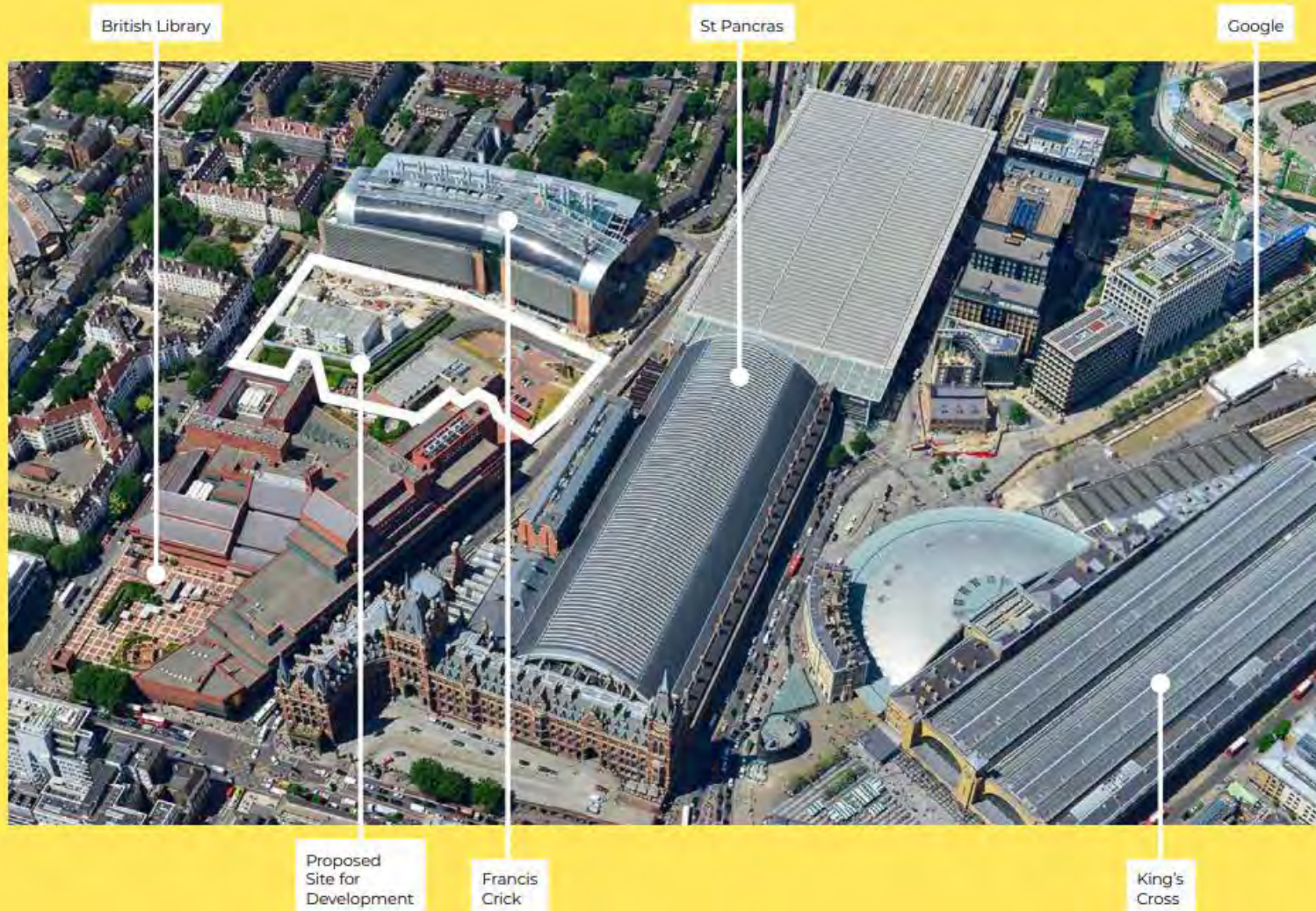
LONDON
COMMUNICATIONS
AGENCY

GERALDEVE 

Tavernor



A UNIQUE OPPORTUNITY



BRITISH LIBRARY EXTENSION:
A PARTNERSHIP BETWEEN SMBL AND THE BRITISH LIBRARY

BRITISH
LIBRARY

MITSUI FUDOSAN

STANHOPE

Rogers
Stirk
Harbour
+ Partners

DSDHA ARUP

AIMS OF THE PROJECT

1. Growing the Library offer

2. Unlocking London's largest transport hub

3. Creating the heart of the Knowledge Quarter



RECAP: WEBINAR 1

Historic British Library Site Development Plans



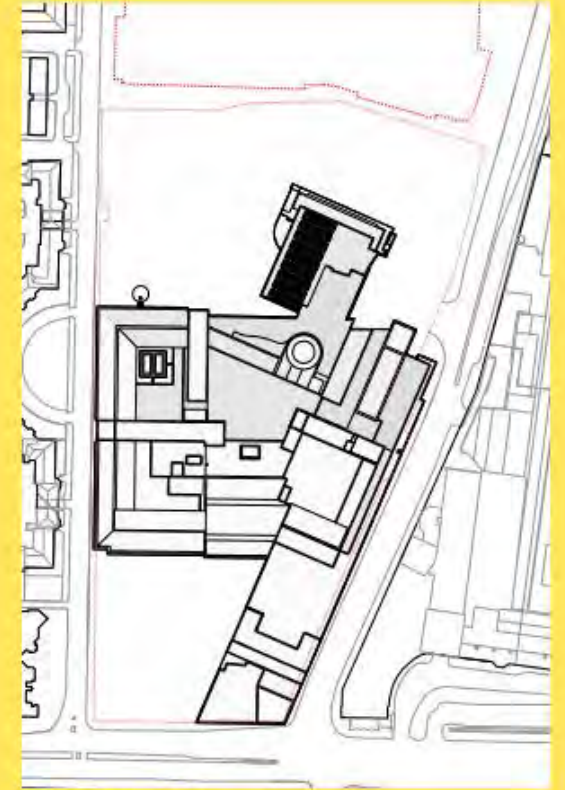
British Library 1978.



British Library 1998.



British Library Historic Roof Plan.



British Library 2007.

BRITISH LIBRARY EXTENSION:
A PARTNERSHIP BETWEEN SMBL AND THE BRITISH LIBRARY

BRITISH
LIBRARY

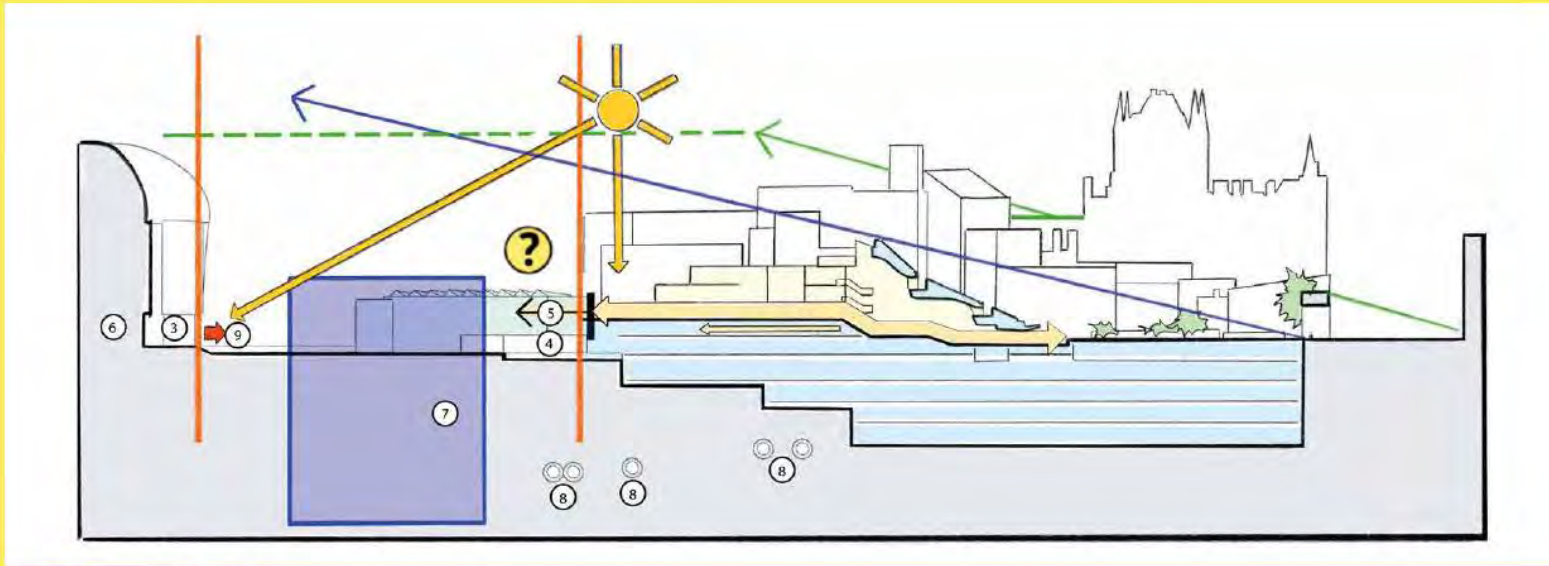
MITSUI FUDOSAN

STANHOPE

Rogers
Stirk
Harbour
+ Partners

DSDHA ARUP

RECAP: WEBINAR 1

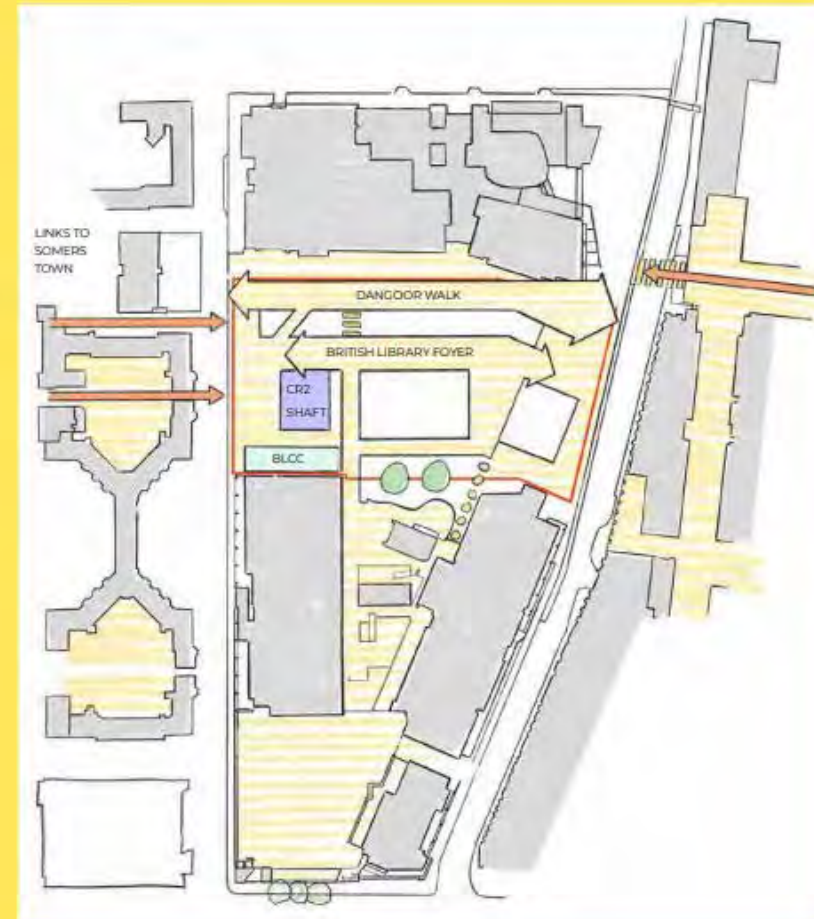


N/S Site Constraints Section.

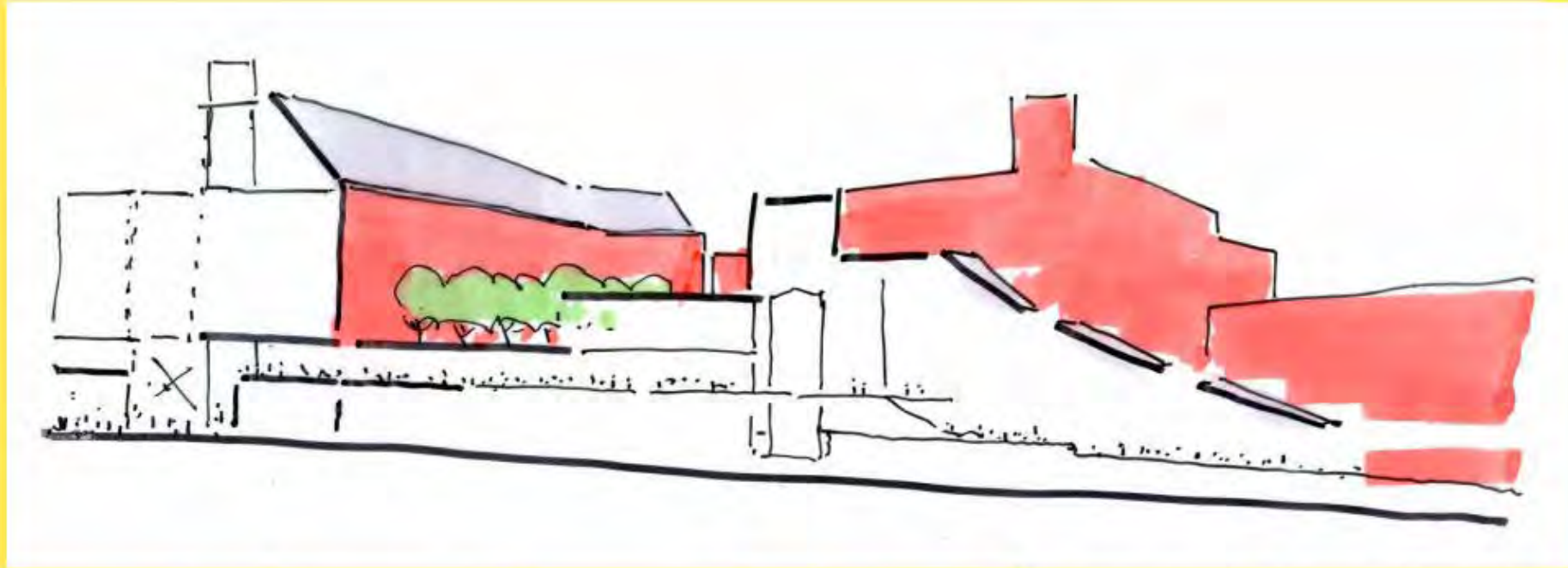


1. Development area
2. Impact considerations including daylight and sunlight
3. Public routes of Dangoor Walk
4. Loading bay at ground floor level
5. Required Library extension over three floors
6. Francis Crick Institute
7. Safeguarded CR2 infrastructure
8. Existing Tube Line tunnels
9. New Northern entrance to Library
10. Height Limit restricted by surrounding buildings
11. Backdrop views from existing British Library entrance forecourt
12. Existing public circulation terminated by existing external terrace

RECAP: WEBINAR 1



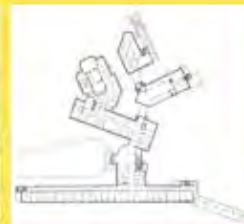
RECAP: WEBINAR 1



Auditorium of the University of Technology, Helsinki.



Seinäjoki town hall, Finland.

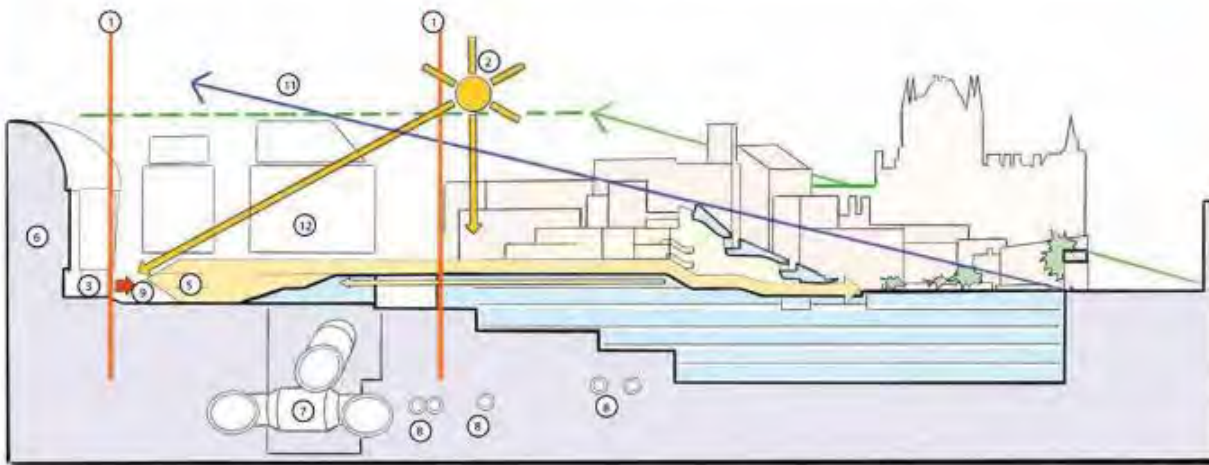


Alvar Aalto - Paimio Sanatorium, Finland.



Alvar Aalto - Saynatsalo Town Hall, Finland.

RECAP: WEBINAR 1

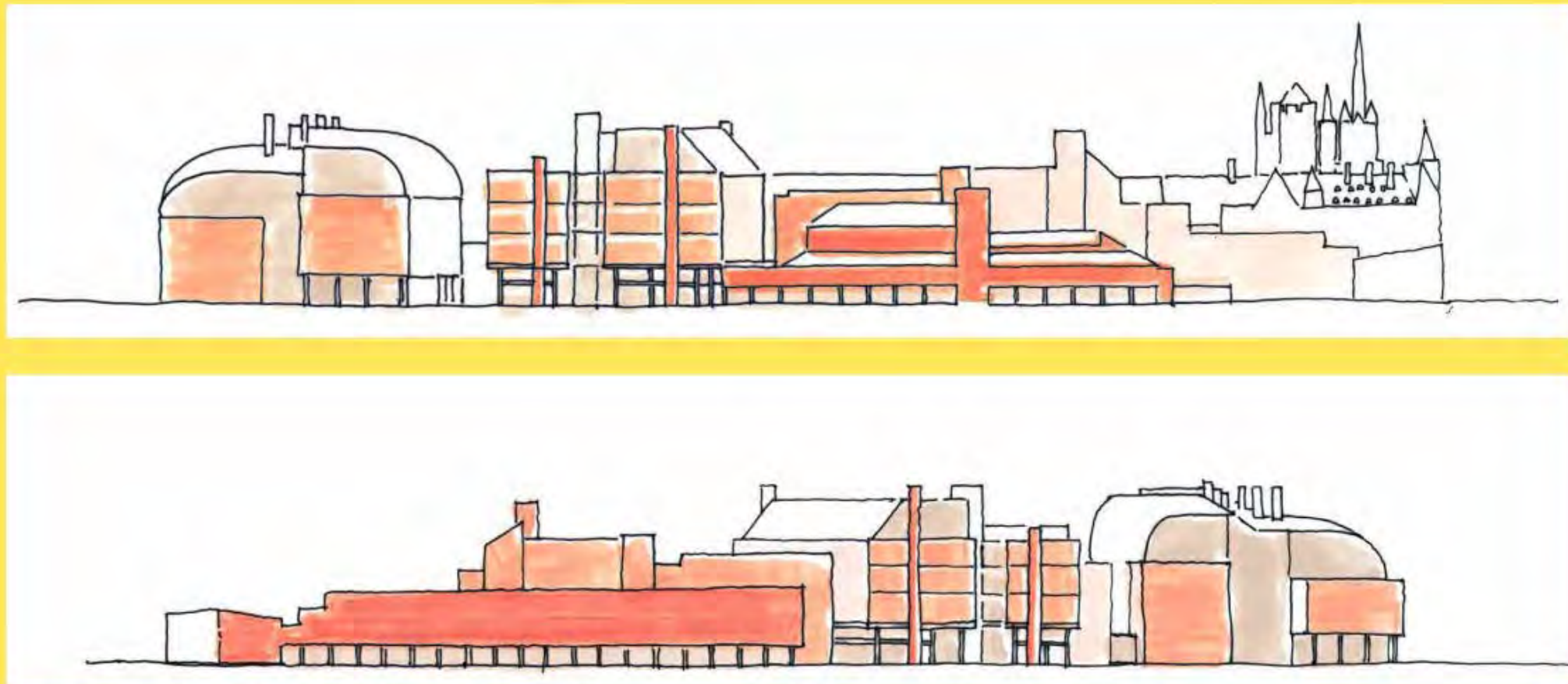


N/S Site Constraints Section.

Listed Buildings

1. Development area
2. Impact considerations including daylight and sunlight
3. Public routes of Dangoor Walk
4. Loading bay at ground floor level
5. Required Library extension over three floors
6. Francis Crick Institute
7. Safeguarded CR2 infrastructure
8. Existing Tube Line tunnels
9. New Northern entrance to Library
10. Height Limit restricted by surrounding buildings
11. Backdrop views from existing British Library entrance forecourt
12. Existing public circulation terminated by existing external terrace

RECAP: WEBINAR 1



Elevation to Ossulston Street (Top) and Midland Road (Bottom).

RECAP: WEBINAR 1

Provision of a major cultural space for London designed, managed and programmed to be inclusive for all, and specifically integrating the needs and creating opportunities for the local community.

SMBL and BL will support a programme of events to bring the local community, businesses, library and KQ occupiers together to explore opportunities and local projects



RECAP: WEBINAR 2

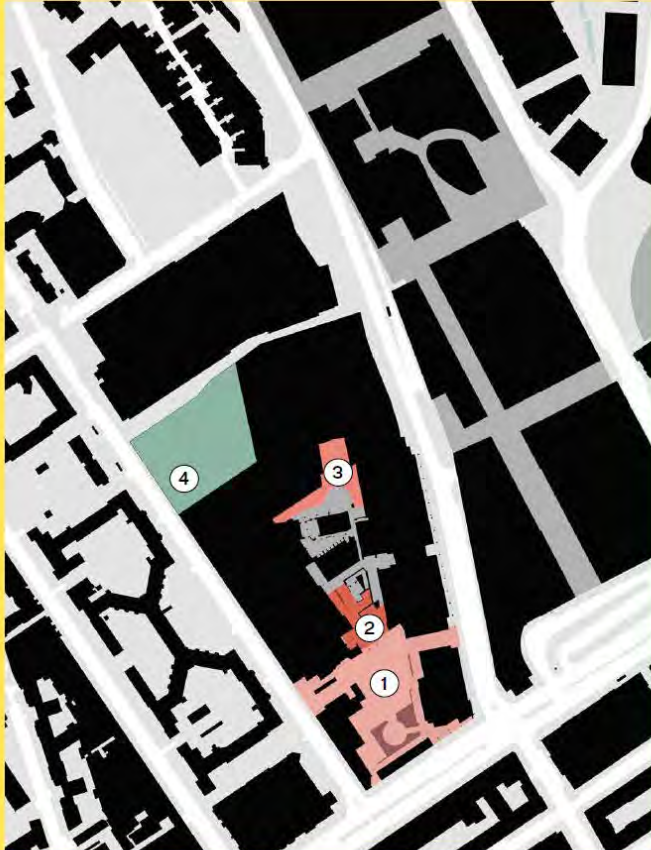


British Library Existing Public Spaces

Key

- ① British Library Piazza
- ② British Library Entrance
- ③ British Library Terrace
- ④ Temporary Story Garden

RECAP: WEBINAR 2



British Library Existing Public Spaces



Proposed Character Areas

Key

- ① British Library Piazza
- ② British Library Entrance
- ③ British Library Terrace
- ④ Temporary Story Garden
- ⑤ British Library Foyer
- ⑥ Dangoor Walk
- ⑦ Ossulston Street Public Realm
- ⑧ Midland Road Public Realm
- ⑨ Somers Town Improvements

RECAP: WEBINAR 2

PROPOSED PUBLIC SPACE



Existing Condition - Ossulston Street highlighted



RECAP: WEBINAR 2

PROPOSED PUBLIC SPACE

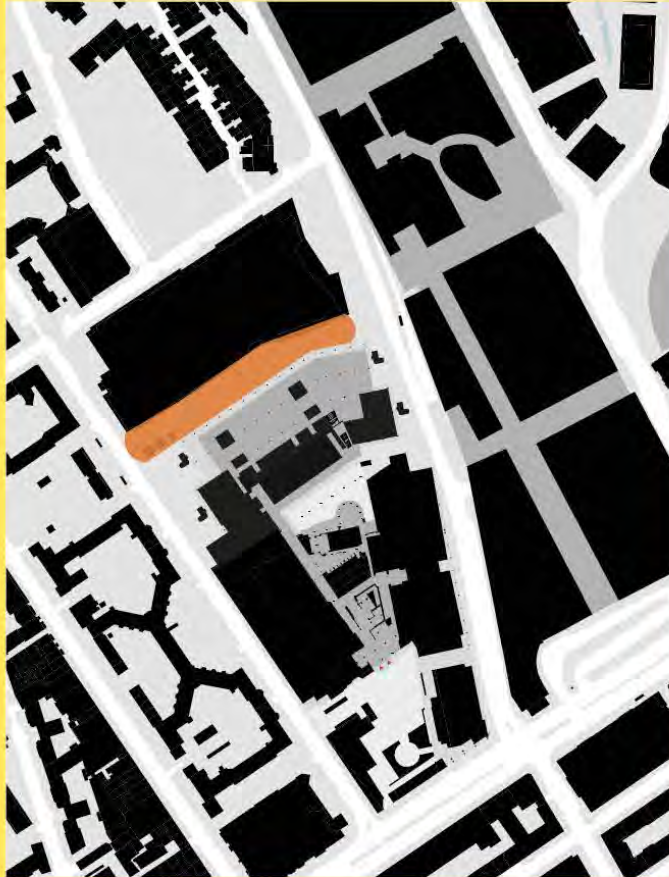


Proposed Character - Midland Road



RECAP: WEBINAR 2

PROPOSED PUBLIC SPACE



Proposed Character - Dangoor Walk highlighted



Rogers
Stirk
Harbour
+ Partners

BRITISH LIBRARY EXTENSION:
A PARTNERSHIP BETWEEN SMBL AND THE BRITISH LIBRARY

BRITISH
LIBRARY

MITSUI FUDOSAN

STANHOPE

Rogers
Stirk
Harbour
+ Partners

DSDHA ARUP

RECAP: WEBINAR 2



BRITISH LIBRARY EXTENSION:
A PARTNERSHIP BETWEEN SMBL AND THE BRITISH LIBRARY

BRITISH
LIBRARY

MITSUI FUDOSAN

STANHOPE

Rogers
Stirk
Harbour
+ Partners

DSDHA ARUP

RECAP: WEBINAR 3



A major cultural space for London, designed to be managed and programmed to be inclusive for all, and specifically integrating the needs and creating opportunities for the local community

SMBL and BL will support a programme of events to bring the local community, businesses, library and KQ partners together to explore opportunities and local projects

Facilitating information and digital literacies, enabling people to connect with the information they need for research, inspiration and enjoyment



RECAP: WEBINAR 3

What we currently do

- **Show and Tells** – Working with local groups to highlight the Library's exhibitions for *Show and Tells* e.g Working with the Somalian, Ethiopian and older age communities
- Free tickets for exhibitions
- **Story Garden** – working with local young people for the *Voices of the Earth* programme
- **C4WS Film Club** – supporting local homeless residents
- **The Stories we Tell** – working with local youth charity, New Horizon Youth Centre
- **Informal meetings with local residents** – exchanging knowledge, experiences, and ideas - working with and learning from one another
- **Hosting public events** - using the Piazza to host local events including Somers Town festival, Bengali New Year, Ramadan Tent's 'Open Iftar' and Christmas events
- **Supporting existing local community events** – having a presence at key local festivals including Bloomsbury Festival, the Camden Mela and Hillview Festival

RECAP: WEBINAR 3

Future opportunities

- **More collaboration and greater co-curation** – working with the local schools and community groups on projects, events and exhibitions that will be hosted in the British Library's new spaces
- **Working with the Living Centre and other local groups** – to support key employability initiatives including work experience, mentoring and offering support for those further from the job market through the proposed Food Hub.
- **Convening opportunities** - from external stakeholders to support local residents including the KQ, commercial tenants and BIPC alumni
- **Offering new space** – ability to host a variety of community focussed and community led events and activities for schools, families and community groups within the new spaces
- **Supporting local residents** – working with Library colleagues to upskill and support learning opportunities for children, young people and adults

FEEDBACK FROM WEBINARS

- Will this effect light and shadows for residents of the Levita House?
- Will this be a genuinely open space for the public?
- How will you prevent sound impacts for local residents
- Is there room for a community-led heritage gallery or other cultural space?
- Will there be affordable workspace?
- Will the existing BLCC be demolished?
- Will there be spaces for young people to use?
- Will Somers Town residents be able to use the space and run our own events?
- 600,000 sq ft of office space will reorient the space a lot, what is the point?
- What will you do to mitigate the impact on local Somers Town residents?
- Will the space be open 24/7?
- What is the timeline for this?
- Have you considered the impact of pollution?
- Will there be a park? There is too little green space in Somers Town
- It is vital you work with existing community and schools on the use of spaces
- Could you tell us more on the space for small businesses and affordable workspaces
- Consider involvement with local schools on future initiatives and the Foyer area
- Allow for students to continue to use the spaces
- Will we get to talk to the ATI on the proposals? Have they been considered?
- Will you be removing the wire fencing between the Library and the Crick?
- There is a lot of concern over the impact of construction
- I suggest coming out to the community in the New Year for the next stage of consultation

ONLINE AND SOCIAL MEDIA FEEDBACK

- **Land at the back of the library seems wasted at the moment and needs an upgrade**
- **Fear the Library will become large shopping mall-inspired space**
- **100,000 sq ft of Library space vs 600,000 sq ft of office space wrong ratio**
- **Will you be planting trees and vegetation to replace the Story Garden?**
- **Library needs space for proper users – don't give free Wifi for casual users**
- **Key issue at the moment is accessibility to all, including visually impaired**
- **Would like to see a more open and inviting space with more collaboration space / meeting space**
- **Public realm inside and outside should be accessible and flexible**

KEY THEMES – ARE THESE RIGHT?

- **Concerns over level of wider development in Somers Town**
- **Impact on Somers Town residents in terms of increased footfall and noise pollution**
- **Desire for genuinely open space in the development/not closed off to local community**
- **Wish for the community to run spaces for own events and uses**
- **Needs to be improved internal and external accessibility throughout development**
- **The development will need to be sensitive to character and heritage of area**
- **Concerns over the scale of development, such as the size and massing**
- **Concerns over the amount of office space compared to existing library space**
- **Spaces need to be allocated for young people and affordable workspaces for businesses**
- **Desire for a standalone heritage space**

COMMUNITY ENGAGEMENT TO DATE

- **What can we be doing to better engage with the community?**

NEXT STEPS

CONTACT DETAILS



www.blextension.co.uk



0800 307 7968 (freephone)



blextension@londoncommunications.co.uk

THANK YOU