



Artists impression of community space and the British Library extension from Ossulston Street

UPDATE ON THE VISION FOR THE BRITISH LIBRARY EXTENSION PROJECT

NEW YEAR UPDATE

A transformation is being planned to extend the British Library in London to help it become the most open, creative and innovative institution of its kind anywhere in the world, which is an important part of the British Library's "Living Knowledge" vision. This project will extend the Library's learning, business and exhibition spaces. It has been brought forward by the British Library and SMBL Developments – a joint venture between Stanhope Plc and Mitsui Fudosan UK Ltd - to deliver the full potential of the site.

Owing to the Covid-19 pandemic, we launched an online consultation in October 2020 to introduce the aspirations for the project and initial design concepts for the British Library extension at www.blextension.co.uk.

Since then, we have heard a range of thoughts and ideas from the local community and stakeholders both through online feedback, over the phone, video calls, and through online presentations and a series of themed webinars.

We still want to hear any views you have, so do get in touch. We will be presenting the developed designs in more detail later this Spring.

PROJECT SUMMARY

This project would provide a number of benefits and opportunities for the local community and area:

- A series of internal and external public and civic spaces for everyone to enjoy
- New north-south and east-west routes to improve accessibility through the site
- New entrances to the British Library on Midland Road and Ossulston Street
- Approximately 100,000 sq ft of new space for the British Library to deliver much needed space for their existing learning, business support and exhibition spaces
- 600,000 sq ft of new commercial space to be leased to those who want to work and collaborate with businesses and communities in the Knowledge Quarter and the Life Sciences sector
- Encourage links in Somers Town between the Library, businesses and residents
- New employment opportunities from the additional commercial space, providing opportunities for jobs that will be available for locals during and after construction
- Improved public realm and improvements to Dangoor Walk
- Creating a legacy for the Story Garden within Somers Town through a community garden
- Relocating and re-providing the British Library Centre for Conservation
- Helping to deliver a new Crossrail 2 interchange by connecting Euston and St Pancras with the Crossrail 2 network
- A new headquarters for the Alan Turing Institute
- A sustainable building that has been designed to reflect the vision of the UN Sustainable Development goals

SUMMARY OF CONSULTATION ACTIVITY SO FAR

Following the COVID-19 pandemic, a virtual and online consultation was launched in Autumn 2020 to present the emerging proposals for the British Library extension project. This included a comprehensive consultation website and extensive promotion of the site within the local community, as well as a number of online presentations with members of the local community.

We have welcomed all the feedback received so far, which has been really important in raising areas of concern that local people and stakeholders have had.

13,300

PEOPLE RECEIVED THE FIRST NEWSLETTER IN OCTOBER

OVER 2,200

PEOPLE VISITED THE CONSULTATION WEBSITE

50

WRITTEN PIECES OF FEEDBACK THROUGH ONLINE FEEDBACK FORMS

OVER 80,000

PEOPLE VIEWING SOCIAL MEDIA ADVERTS, WITH 162 LIKES & 41 COMMENTS

1,500

COPIES OF THE WEBSITE PRINTED AND DISTRIBUTED TO THE LOCAL COMMUNITY

5

ONLINE PRESENTATIONS

1

ADVERT

ATTENDED BY 45 LOCAL STAKEHOLDERS AND COMMUNITY REPRESENTATIVES

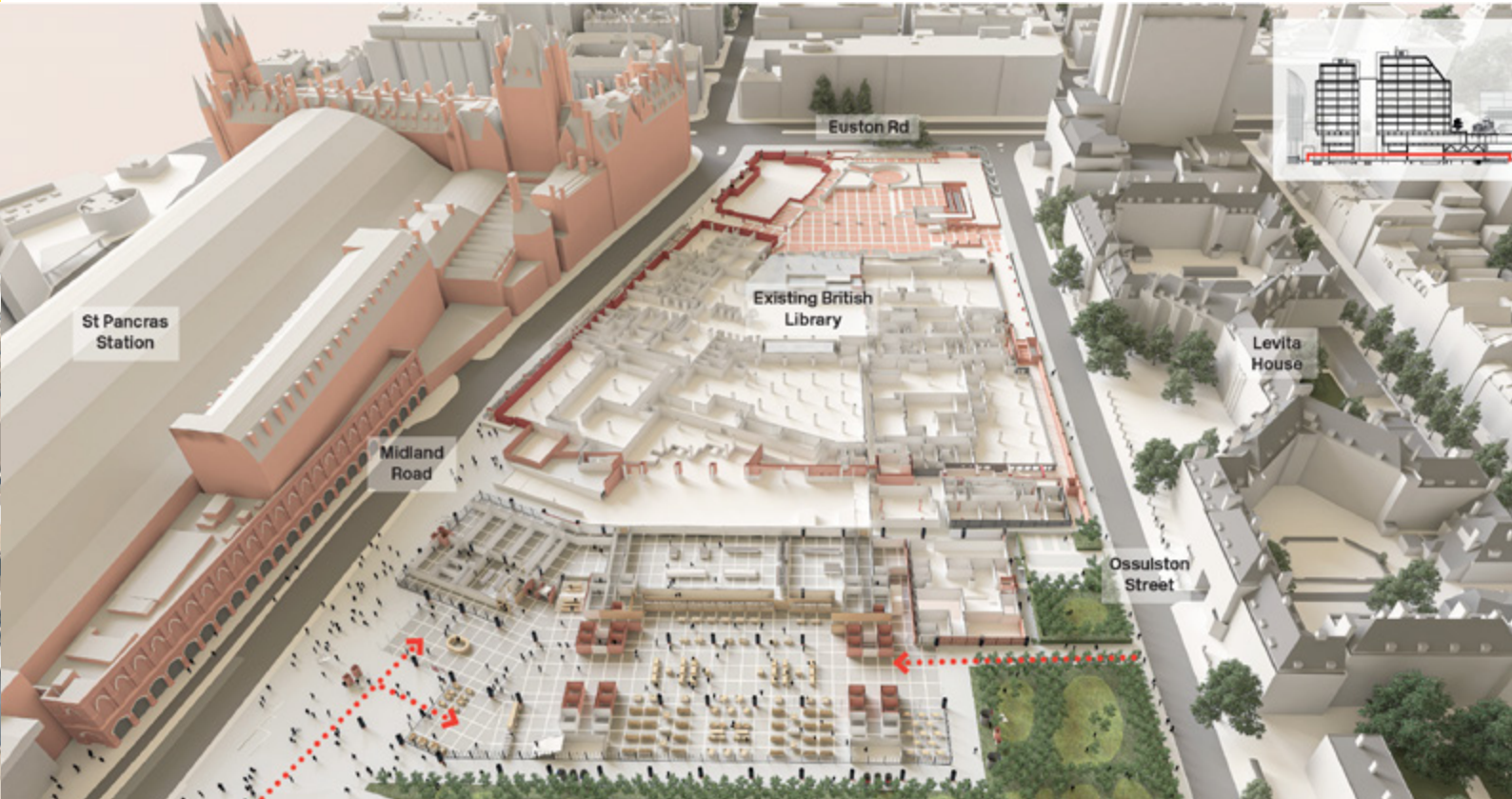
IN THE CAMDEN NEW JOURNAL



The current site of the project



Artists impression of the British Library extension once completed



Overview of the ground level of the British Library extension area with more green spaces as displayed at the bottom of the site

A LIBRARY FOR EVERYONE

The extension will deliver a significant number and diversity of jobs, work placements and apprenticeships through:

- Jobs during construction
- 600,000 sq ft of new commercial space
- 100,000 sq ft of new space for the British Library, including space for the Alan Turing Institute.

These new spaces will provide support for start-ups through:

- Free wifi and new study desks within the new spaces
- Support for small businesses in the Library Business and & IP Centre
- Incubator space and spin out space for Knowledge Quarter SMEs in commercial building

This project will help connect businesses with the local community through:

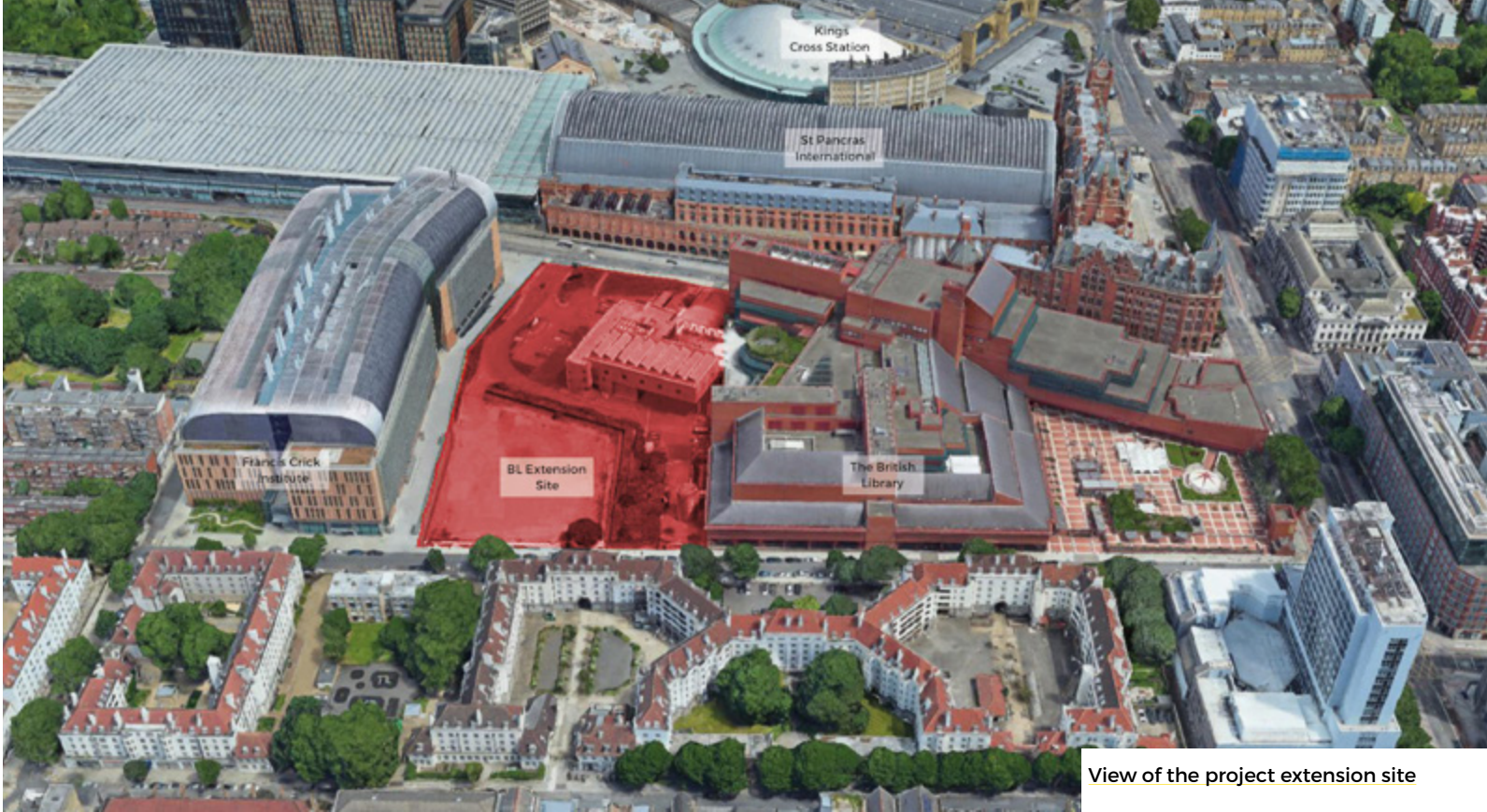
- Accommodating events and activities in the foyer space
- Encouraging job opportunities through KXCSC and the Somers Town Job Hub.
- Potential to provide education, services and support to the community and local schools
- Promoting Camden STEAM Commission objectives and other initiatives, such as Good Work Camden, and London Living Wage.



Proposed internal view of Foyer space – which will be publicly accessible to all and will lead into the commercial and library spaces within the extension as well as the retail offer at ground level



Internal view of Foyer space



View of the project extension site

BENEFITTING THE COMMUNITY

Since the consultation launched in Autumn 2020, and following discussions with LB Camden and the local community, we have continued to develop the designs for the British Library extension.

Taking into account the essential works for delivering Crossrail 2, the proposed extension will offer lots of new walkways with new trees and planting that will be accessible for all. We have also moved the proposed extension block to the east to reduce the impact on neighbouring residents and further increase the amount of green space.

We have also made further improvements to Dangoor Walk and have been developing designs for a community garden.

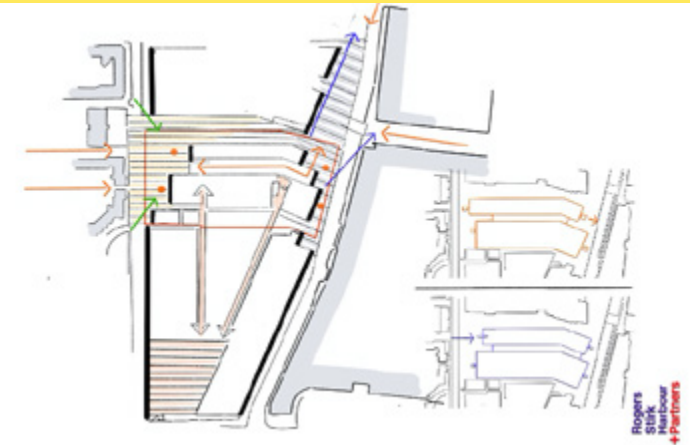


Illustration displaying how the proposed building footprint has moved to provide more public realm to the west of the site

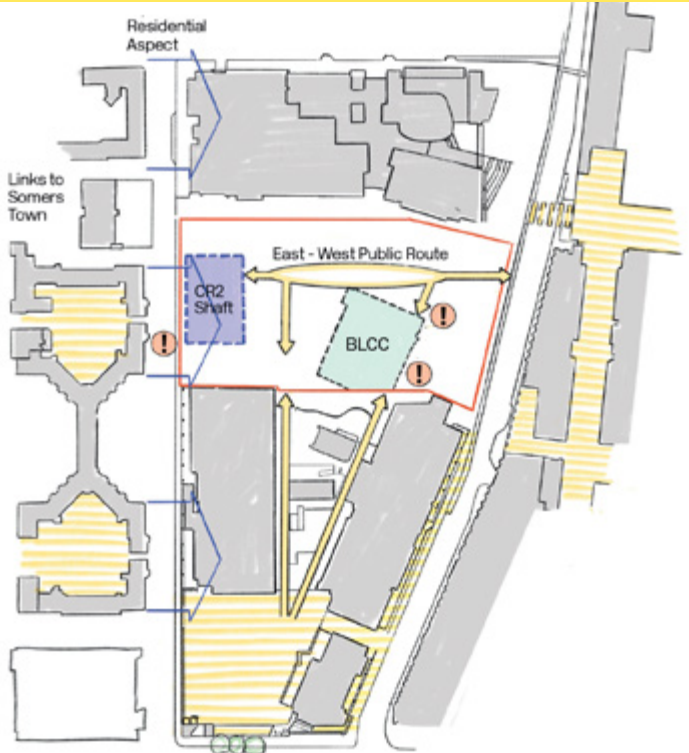


Illustration displaying how the design will allow for the enabling works for Crossrail 2 and greater accessibility through the site



Improved public spaces on Dangoor Walk

HUB FOR THE KNOWLEDGE QUARTER

This site is located at the heart of the Knowledge Quarter, one of the greatest concentrations of knowledge-based cultural and scientific businesses anywhere in the world.

A significant part of the extension will include commercial space which will be leased to Knowledge Quarter occupiers and those who wish to collaborate with businesses and communities located within the Knowledge Quarter and businesses who have an interest in the Life Sciences sector.

BUILDING FOR A CHANGING CLIMATE

We are committed to ensuring that the extension is environmentally considerate for local residents and the community. Therefore, the extension will utilise the following measures to ensure the proposed extension is built for the long-term:

- New, biodiverse and comfortable green spaces for people to enjoy
- New north-south and east-west routes to improve accessibility through the site
- A building designed to be sustainable (long-life adaptability and low carbon, healthy materials)
- High quality cycling facilities to encourage active travel
- Minimising vehicle movements to improve air quality and improve health outcomes.
- All electric building to improve outdoor air quality



Internal view of the proposed Learning Centre

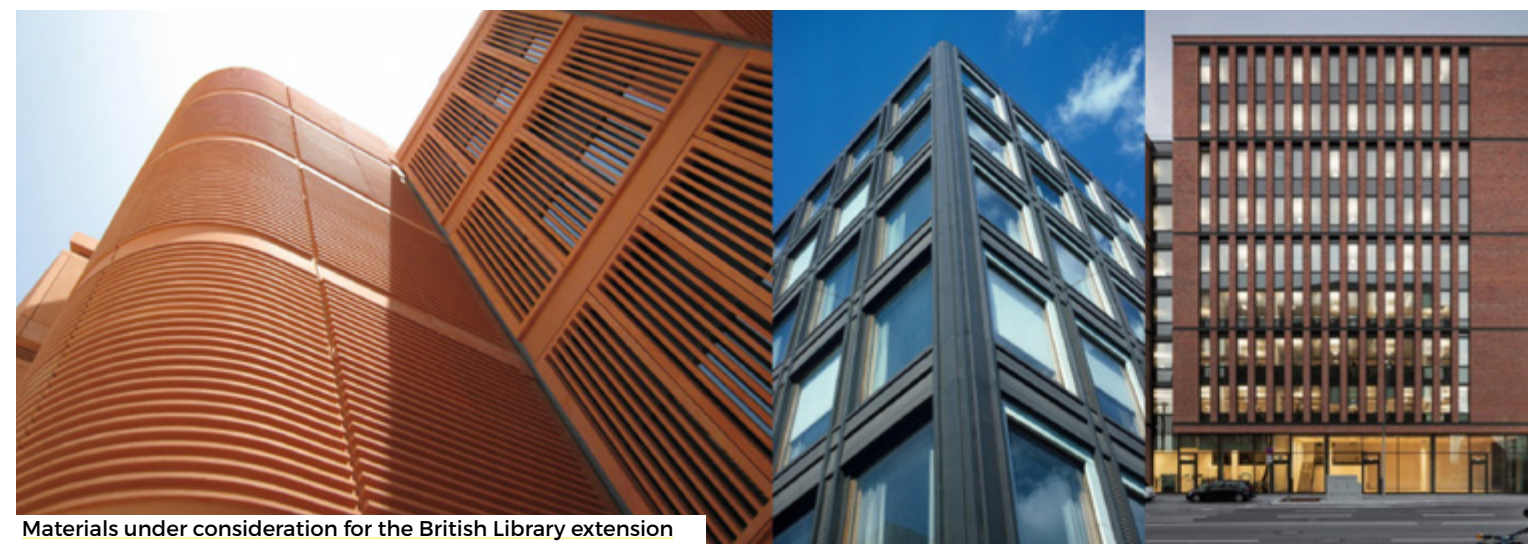
RESPONDING TO THE SURROUNDING AREA

Following the first stage of consultation, a number of principles have been developed to inform the look and design of the new extension to keep in character with the existing British Library and surrounding area. These have included:

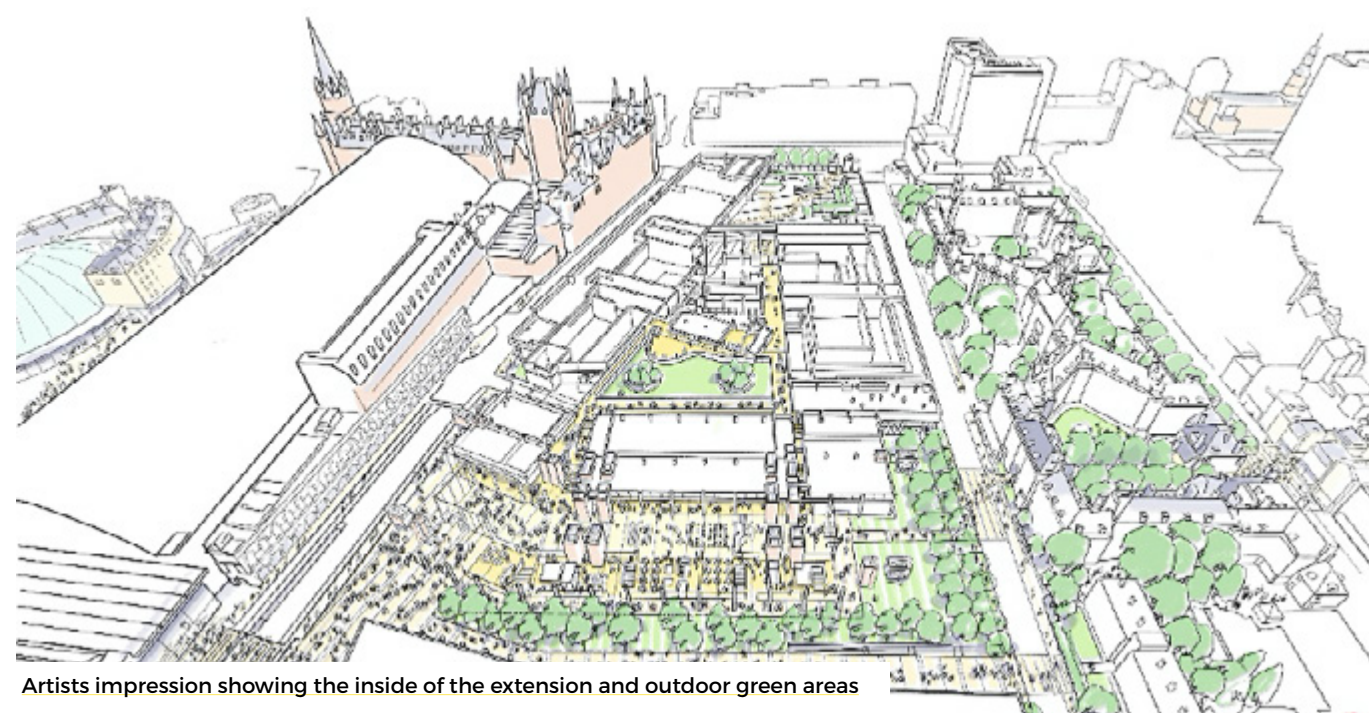
- Ensuring that the appearance of the extension has similar materials and colours
- Red and green horizontal pattern
- Use of tiered roofs



Existing view from inside the British Library Piazza



Materials under consideration for the British Library extension



Artists impression showing the inside of the extension and outdoor green areas



Internal view of Foyer looking towards proposed green public space

TRANSLATING THIS NEWSLETTER

If English is not your first language, and would like a translation of this newsletter, please let us know by emailing blextension@londoncommunications.co.uk or calling 0800 307 7968 with your name, email, and address and we will arrange for a translation to be sent to you.

এই নডিজলটোরটির অনুবাদ

যদি আপনি এই নডিজলটোরটির একটি অনুবাদ পতে

চান, দয়া করে আপনার নাম, ইমেইল এবং ঠিকানাসহ

blextension@londoncommunications.co.uk এই ঠিকানায় ইমেইল করে বা 0800 307 7968 নম্বরে কল করে আমাদের জানান এবং আমরা আপনার কাছে একটি অনুবাদ পাঠানোর ব্যবস্থা করব।

Tarjumida wargeyskan

Haddii aad rabto turjumaad wargeyskan ah, fadlan nala soo socodsii adigoo emayl u diraya

blextension@londoncommunications.co.uk ama soo waca 0800 307 7968 oo wata magacaaga, emaylkaaga, iyo cinwaankaaga waxaananu kuu diyaarin doonaa turjumaad lagu soo diri doono adiga.

NEXT STEPS

We will continue to develop the designs for the British Library extension project and will present these to you in the coming months. Once we take into account the feedback we receive, we will look to submit a planning application to Camden Council in Summer 2021.

We encourage all feedback you have, and you can let us know on one of the following ways:



www.blextension.co.uk



0800 307 7968



blextension@londoncommunications.co.uk

NO INTERNET ACCESS?

If you don't have access to the internet please call us on the number above and we would be happy to send you a hard copy of the website or any other materials and arrange a discussion with the team. If someone you know may also like to receive this newsletter please get in touch and we can arrange for more copies to be sent to you.