

BRITISH LIBRARY EXTENSION

Project Update July 2025

LIBRARY
HSILIRB

SMBL


MITSUI FUDOSAN UK

STANHOPE

The British Library extension

This project – a major expansion on land to the north of the Library – now has approval.

The developer – Mitsui Fudosan UK – has recently committed to taking forward the proposal through a partnership with the Library and Stanhope as development manager.

The British Library extension will make a significant positive contribution to the King's Cross/Somers Town area during construction and following completion.

We'd like your thoughts, questions and comments about the project. Please contact us at:
smb@redwoodcomms.co.uk

Who's who?



SMBL

Project delivery partner to the British Library



STANHOPE

Development Manager to SMBL

The site

Midland Road

THE FRANCIS CRICK INSTITUTE

Story Garden

LIBRARY
HSLIIRB

Ossulston Street

The new building - view from Ossulston Street



Key benefits to the local community



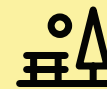
100,000 SQ FT
of **NEW** public
space



£23 million
payment towards
NEW affordable
homes in Somers
Town



NEW
public routes
across the site



NEW
community
garden for all
to enjoy



A substantial
NEW FOYER with
entrances from
Somers Town



A SUSTAINABLE
building



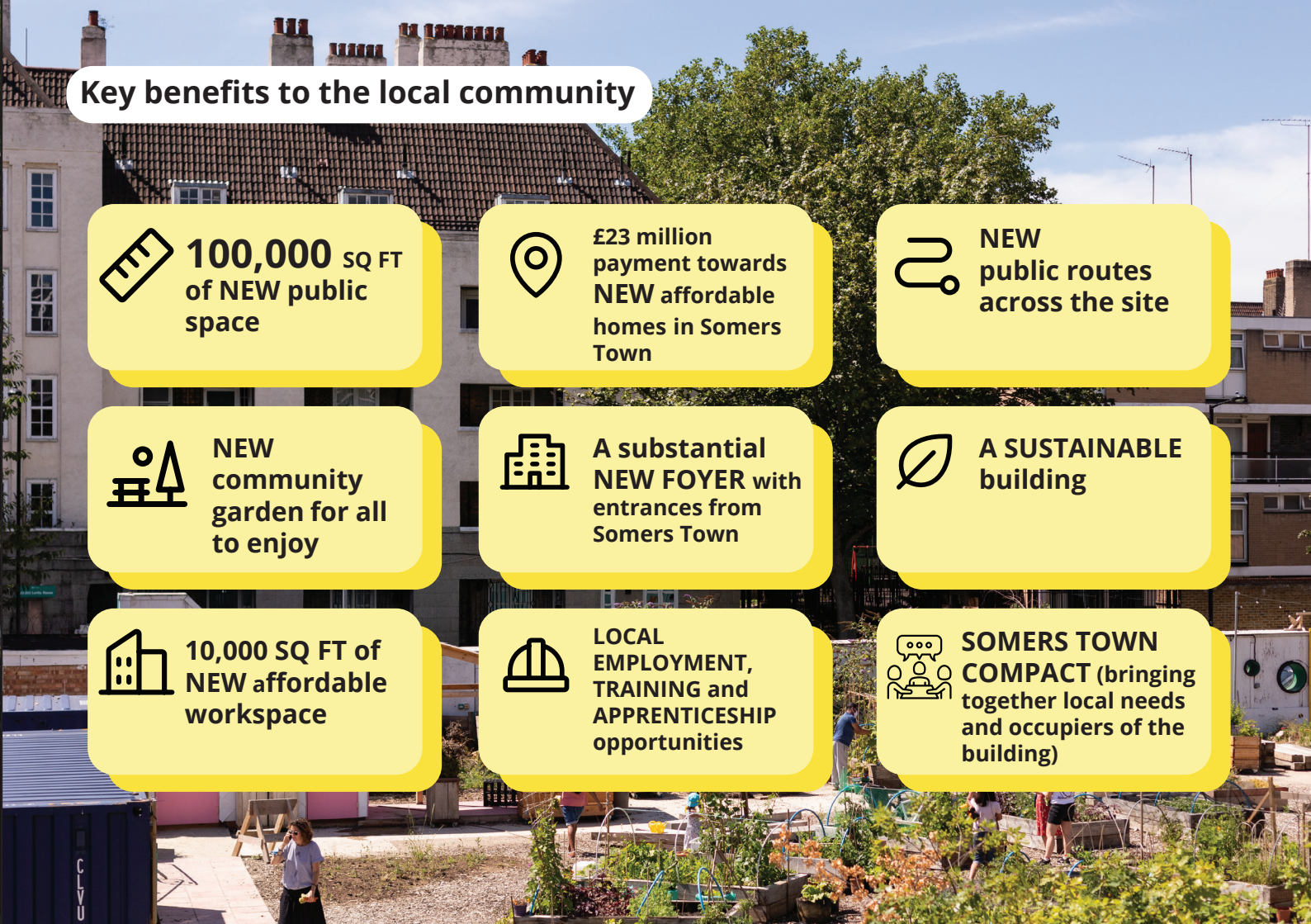
10,000 SQ FT of
NEW affordable
workspace



LOCAL
EMPLOYMENT,
TRAINING and
APPRENTICESHIP
opportunities



SOMERS TOWN
COMPACT (bringing
together local needs
and occupiers of the
building)





New public spaces

- Gallery spaces
- Events space
- More provision for learning and business
- Connections to the existing Library
- New British Library foyer
- New entrances (Ossulston Street and Midland Road)



We need you for three things!

1. A new garden designed with - and managed by - the community

- We want to understand what you might like to see in your new garden
- We'd like to get local schools and colleges involved
- We want to establish a group who want to be involved
- We will help the group develop a brief, instruct designers and have the garden ready in time for the building completion

2. Construction Working Group

- We're setting up a Construction Working Group this autumn with community members and local organisations
- The group will address any concerns and ensure the project proceeds in line with community needs and expectations
- The Compact Manager, Construction Manager, British Library, Francis Crick Institute and SMBL will all attend regular meetings

3. Somers Town Compact Manager

Exciting job opportunity!

Working with Somers Town Community Association, we need a local resident, or someone with a good knowledge of Somers Town who will help us deliver meaningful social impact:

- Working with SMBL, the British Library and the Construction Manager
- Chairing the Construction Working Group and establishing a Steering Group
- Leading on the community garden co-design
- Focusing on local procurement, job opportunities, work experience and apprenticeships for local people
- Setting up projects that will link future occupiers with the local community

Recruiting in Autumn 2025

Please contact us if you're interested in any of these opportunities:

smb1@redwoodcomms.co.uk



Plot 2 (Purchase Street)

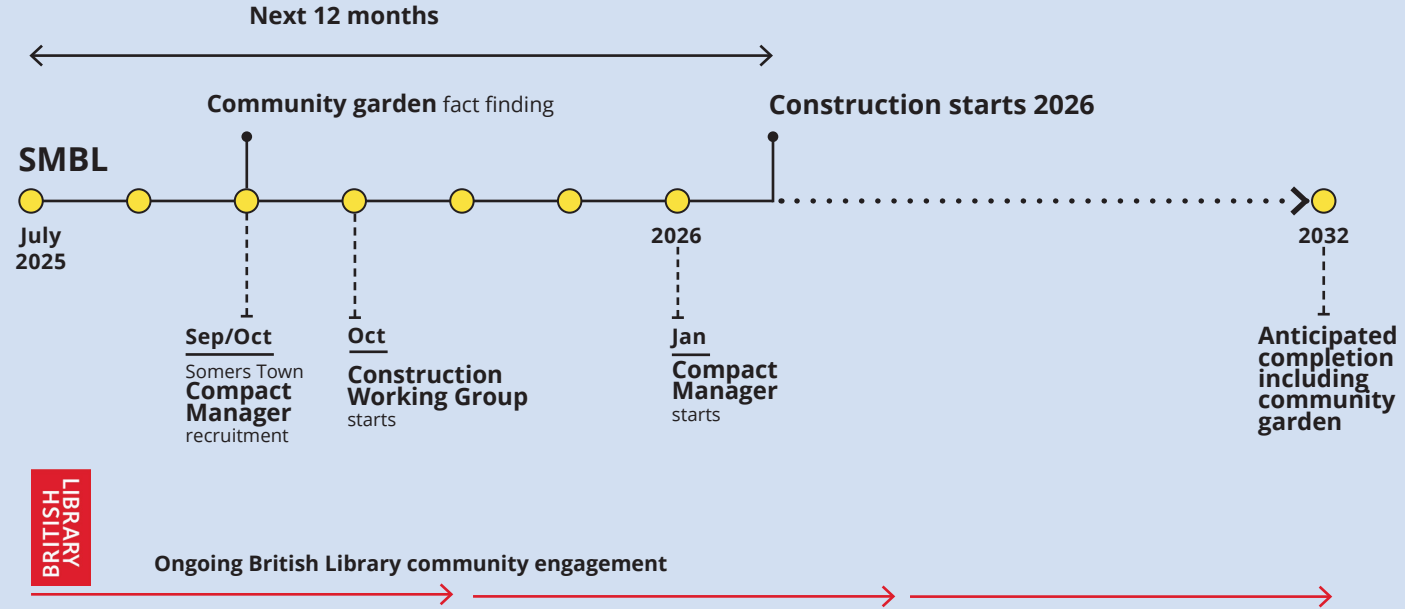
We know that affordable housing is a key local issue.

SMBL is working closely with the Council and is funding affordable housing to be built on this site by Camden.

Camden has now started the process of redesign and planning.

We look forward to seeing new affordable homes delivered by Camden for Somers Town.

Project timeline





Thank you!

If you'd like more information,
please contact Redwood:

smb1@redwoodcomms.co.uk

For regular updates, see our
website: **blextension.co.uk**

BRITISH
LIBRARY

SMBL



mitsui fudosan uk

STANHOPE