



BRITISH LIBRARY EXTENSION
CONSTRUCTION WORKING GROUP MEETING
20 APRIL 2026

CONSTRUCTION WORKING GROUP - AGENDA

Introductions

Minutes of the last meeting

- Matters arising

Social Value update

- To receive a briefing

Works update

- Construction Management Plan update
- Complaints, enquiries, activations

AOB



INTRODUCTIONS

- Welcome
- Introductions
- Apologies
 - Jim Allen
 - Cllr Shah Miah
 - Ann Stannard
- Housekeeping



MINUTES OF THE LAST MEETING

CHAIR

SOCIAL VALUE UPDATE

CHARLES WALFORD
SARAH WRIGHT
SALIMA ABDALLAH

An architectural rendering of a modern multi-story building. The building features a prominent red facade with a grid of green panels. A glass-enclosed tower is visible on the left side of the building. The ground floor has large glass windows and a covered entrance area. People are walking on the sidewalk in front of the building. The sky is blue with a few birds flying. The text 'COMMUNITY ENGAGEMENT MANAGER' is overlaid in large white letters across the center of the image.

COMMUNITY ENGAGEMENT MANAGER

KEY BENEFITS TO THE LOCAL COMMUNITY



100,000 sq ft of
NEW public space



£23m payment
towards NEW
affordable homes
in Somers Town



NEW public routes
across the site



NEW community
garden for all to
enjoy



10,000 sq ft of
NEW affordable
workspace



**SOMERS TOWN
COMPACT** (bringing
together local needs and
occupiers of the building)



A sustainable
building



A substantial NEW
FOYER with
entrances from
Somers Town



LOCAL employment
training and
apprenticeship
opportunities

BE INVOLVED – JOB & UPSKILLING OPPORTUNITIES

- 75 apprenticeships and 40 job starts for local people via Euston Skills Centre.
- Support residents with employment, with 20%* of our workforce residing in Camden.
- Pay our workforce fairly by committing to pay the London Living Wage as a minimum salary.
- 40 work experience opportunities for local students (14-16).
- 40 work experience opportunities for local students/adults (16+).



**Our target as an average during the construction period*

BE INVOLVED – LOCAL SPEND AND SUPPORT

- Spend with LB Camden businesses and suppliers.
- Support local charities and community groups with pro-bono projects, bio-diversity volunteering and fundraising.
- Engage with 1000 local students through curriculum support activities.



During National Volunteering Week 2025, Mace Construct supported the St Pancras Community Association with their redecorating project.

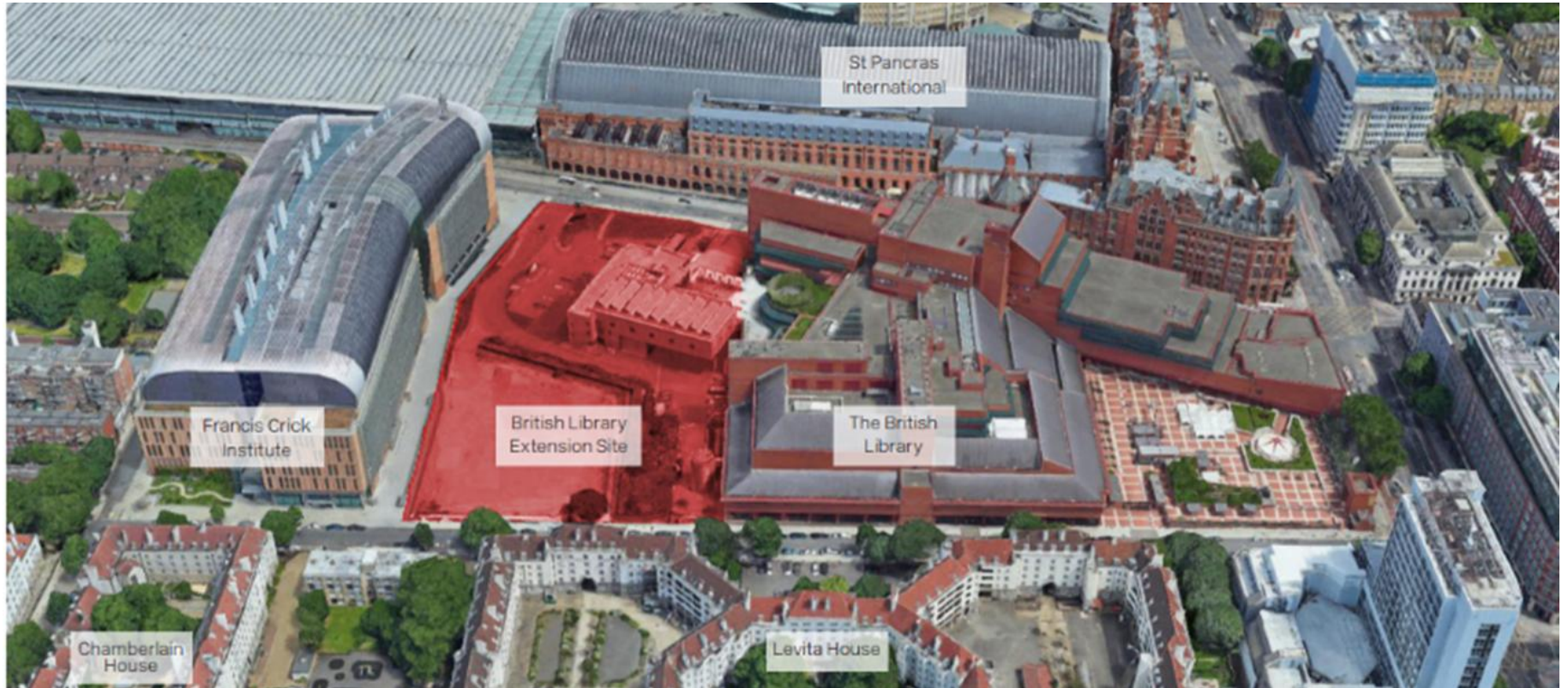
HOARDING GRAPHICS UPDATE

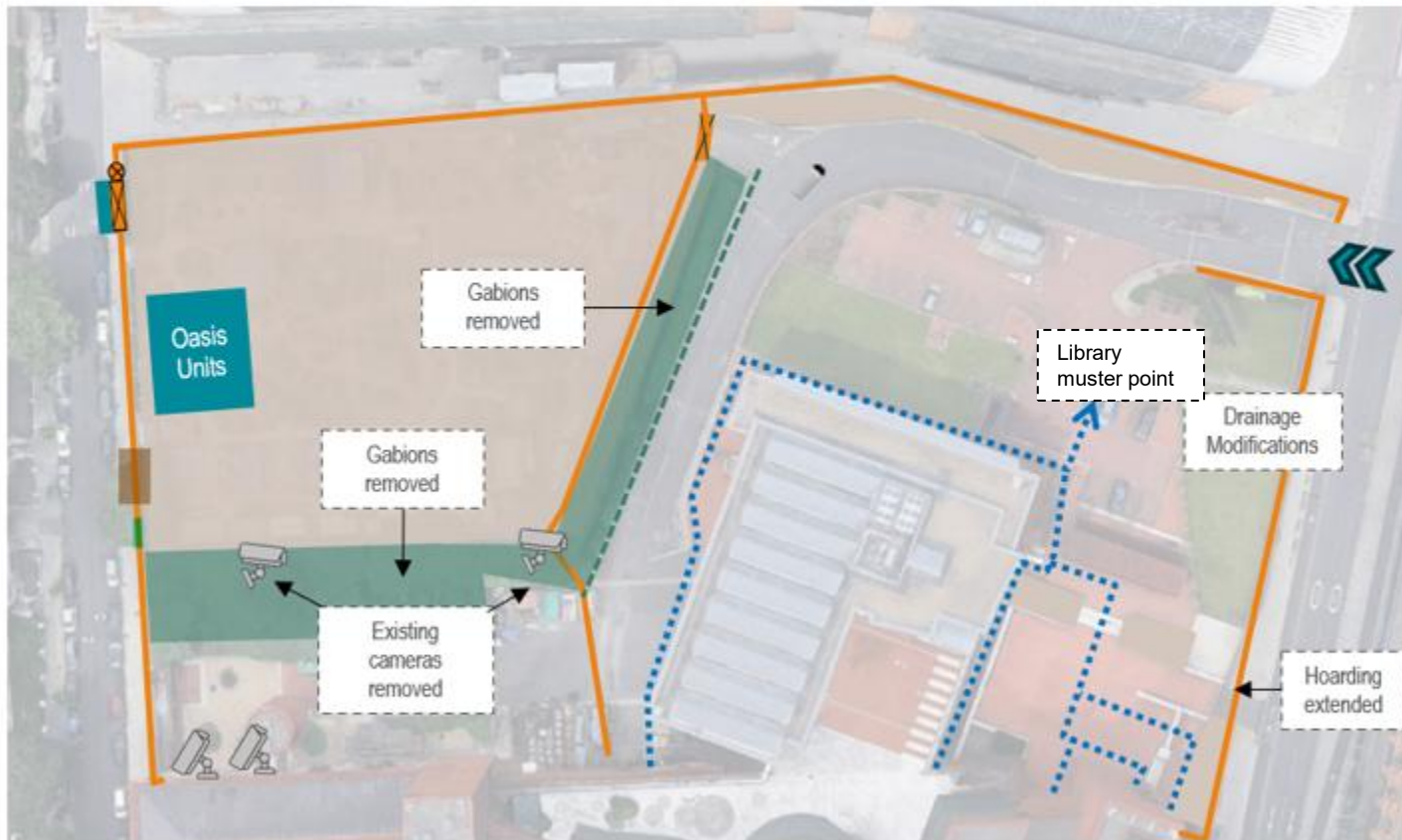
- Interim phase hoarding erected March to June 2026 for 12 to 24 months.
- Graphics about the scheme will be added once the hoarding installation is completed.
- The Library and SMBL expects to formally gather interest from the community for creative uses of sections of the hoardings in the longer-term phase two.
- Many local people may like to work with us on a co-creation project and we would like to do this fairly and openly to give everyone a chance to express their interest.
- The interim phase will enable us to fully explore ideas and execute the final route to the best possible standards to ensure that the co-creation is a positive addition to the local area.

WORKS UPDATE

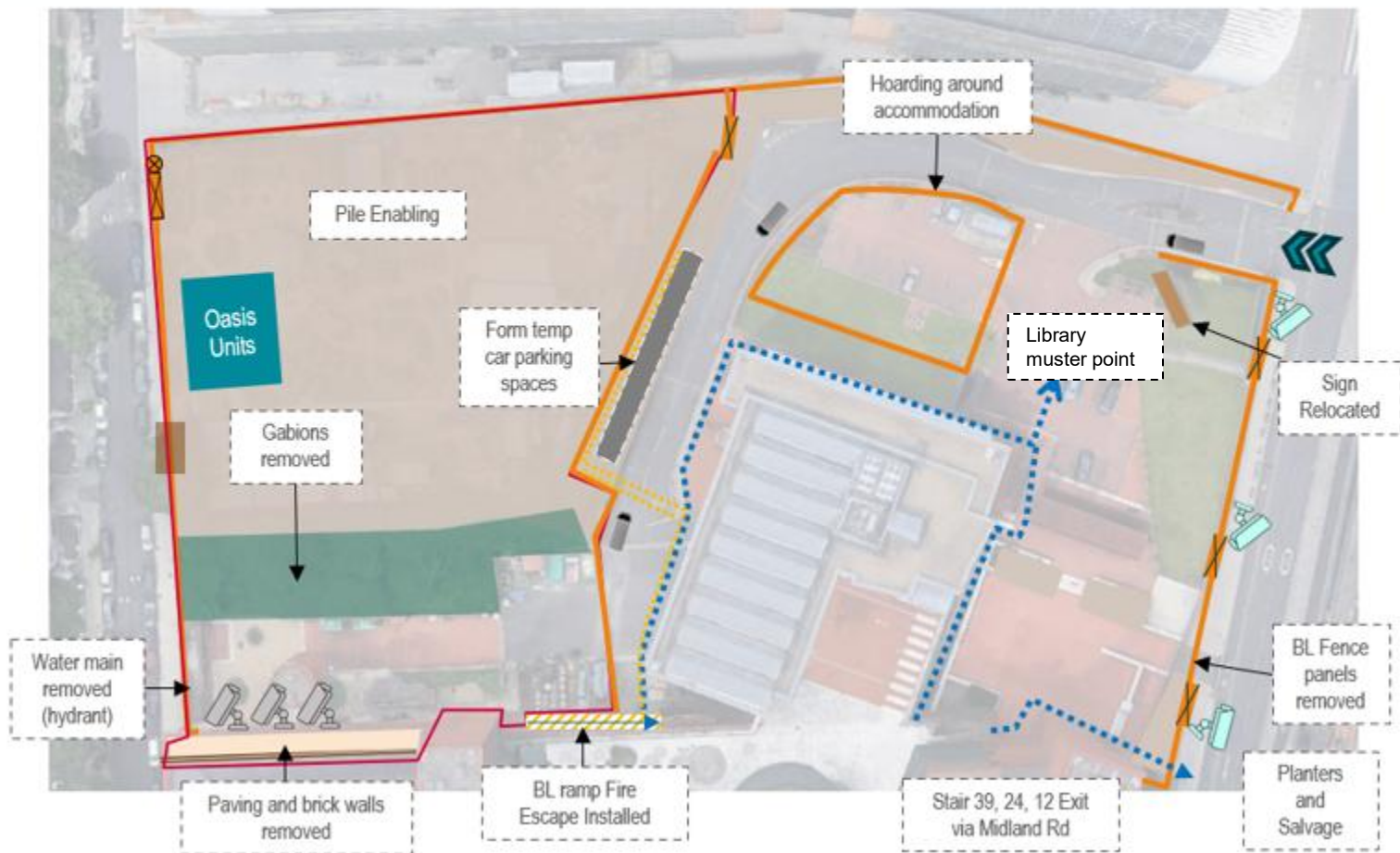
GRAHAM BARTER

SITE - CONTEXT





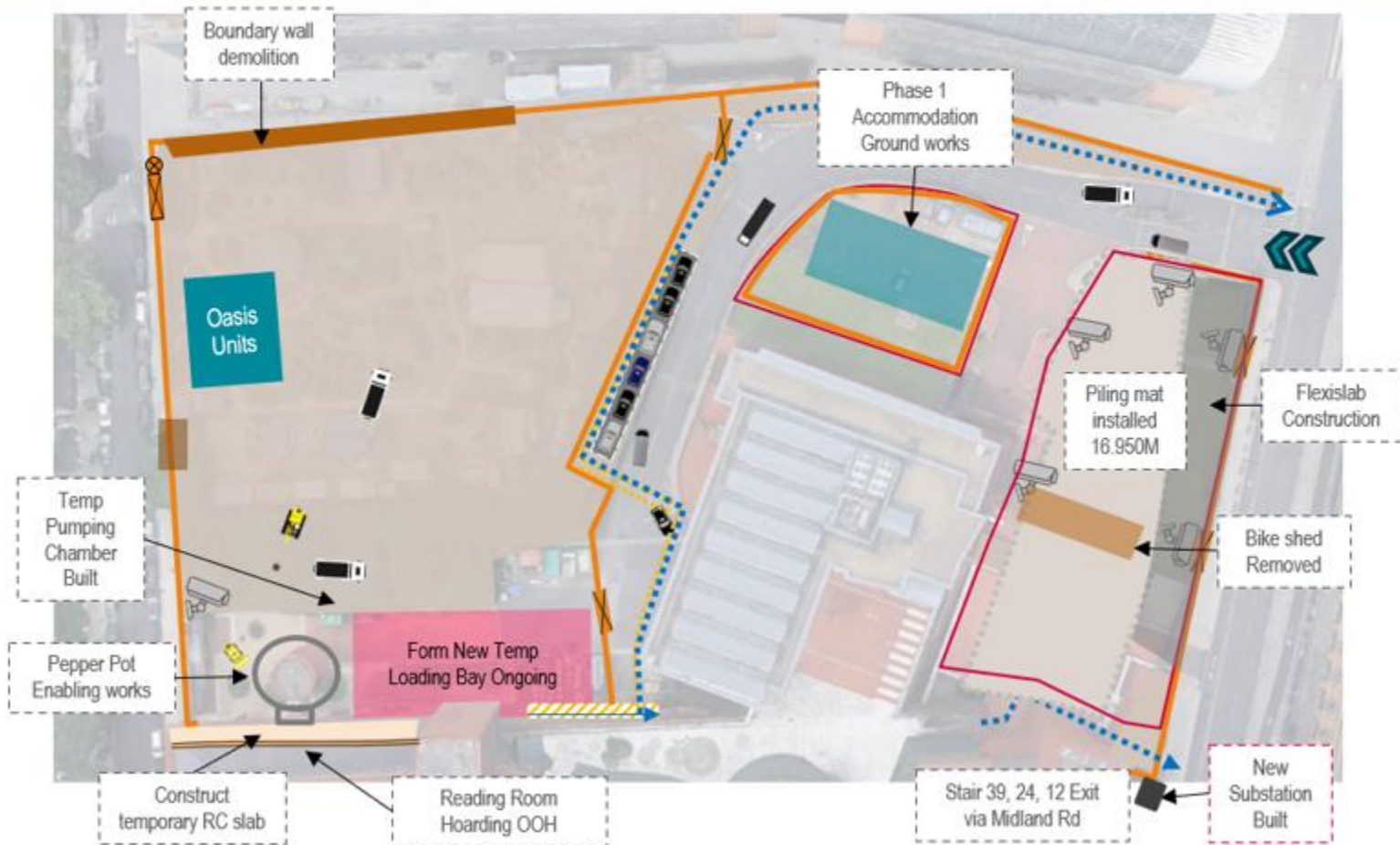
JUNE 1ST HALF



JUNE 2ND HALF



JULY 1ST HALF



ADVANCE NOTICE - OUT OF HOURS WORKING

When: Late June – mid-July (dates tbc) – Works Notice Letter will be sent

What: Phase one site accommodation - 27 cabins delivered as abnormal loads (19.00-07.00)

How: Installing over five nights – seven cabin units per night

- Each arrives on a wagon and will turn around in former Story Garden area
- Crane unloads each cabin unit and lowers into place
- Lorry leaves, next lorry arrives – approximately one per hour
- Looking to minimise noise eg reversing beacons

ANY OTHER BUSINESS

- Any other business
- Next meeting date Monday 18 May 2026

MACE CONSTRUCT

